

COLLECTION

VILMERS

VILMERS FABRIC EUROPEAN COLLECTION 2024



3	CARE SYMBOLS
4	BOLD MICROFIBERS
5	Texas
6	GREEN FIBERS
7	Beryl
8	LIKE LEATHER
9	Bull
10	Jersey
11	PURE LEATHER
12	Diamonds
13	Granada
14	Vintage
15	PURE NATURE
16	Sandstone
17	ROUGH STRUCTURE
18	Alis
19	Bergen
20	Coltan
21	Fusion
22	Garnet
23	Marble
24	Oasis
25	Taffie
26	SIMPLY NORDIC
27	Austin
28	Casa
29	Eton
30	Hawks
31	Honey
32	Lapis
33	Lido
34	Livale
35	Natron
36	Nordby
37	Opal
38	Paros
39	Rocky crystal
40	Sneak
41	Unit
42	SMOOTH VELVET
43	Adore
44	Seven
45	Velvetlux
46	CHUNKY CORDUROY
47	Angelite
48	Lisboa

CARE SYMBOLS



Wash at or below
(degrees in Celsius/Fahrenheit).



Do not wash.



Iron cool.



Do not iron.



Dry clean.



Do not dry clean.



Do not tumble dry.



Water-resistant.



Easy care.



Sustainable.

BOLD

MICROFIBERS

Enduring and easy to clean.

Composition | 55% PES, 40% PU, 5% CO

Martindale | 60 000

Lightfastness | 4-5

Pilling | 4-5

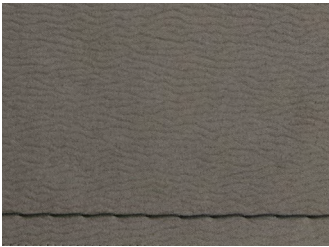


TEXAS

CAT 3



GREEN
Stitching Stone Grey



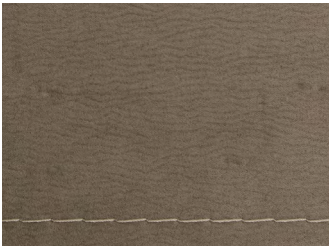
LIGHT GREY
Stitching Dark Grey



COGNAC
Stitching Saddle Brown



IVORY
Stitching Pastel Brown



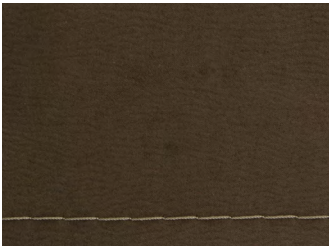
SILVER
Stitching Silk Grey



DARK GREY
Stitching Light Grey



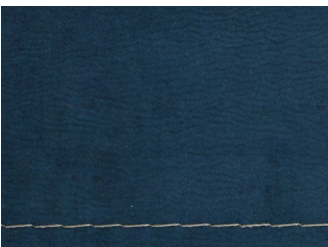
GREY
Stitching Chocolate



ELEPHANT
Stitching Stone Grey



YELLOW
Stitching Chocolate



BLUE
Stitching Grey



BACK TO
INDEX

GREEN

FIBERS

Sustainable fabrics.

Composition | 55% RPES, 36% PES, 9% RCO

Martindale | 70 000

Lightfastness | 5

Pilling | 5



BERYL

CAT 3

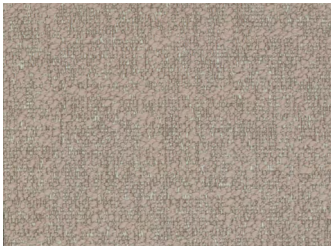
Boucle fabric



BRIGHT WHITE



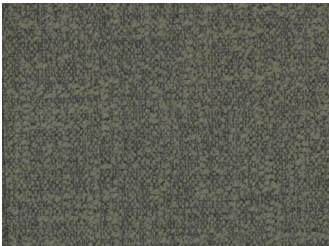
RAINY DAY



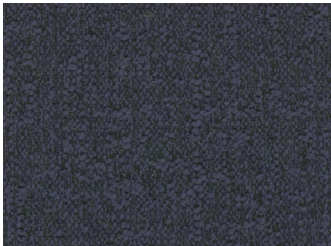
ALUMINIUM



CHOCOLATE
BROWN



MYRTLE



BLUE NIGHTS



ANTHRACITE



BACK TO
INDEX

LIKE

LEATHER

Sustainable leather.

Composition | 96% PES, 4% PU

Martindale | 32 000

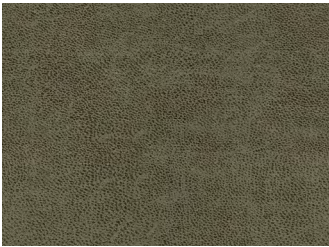
Lightfastness | 3-4

Pilling | 3-4



BULL

CAT 4



FOREST



GRAPHITE



BROWN



GREY



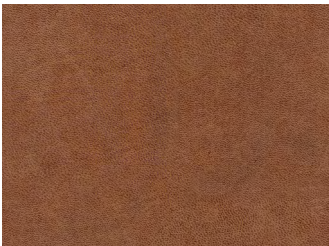
CAMEL



LIVER



NIAGARA



COGNAC



BRANDY



ANTHRACITE



BACK TO
INDEX

Composition | 40% PES, 30% LEATHER, 30% AF
Martindale | 30 000
Lightfastness | 4
Pilling | 4-5



JERSEY

CAT 5



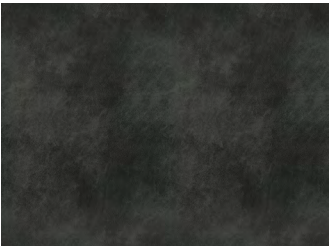
MOSS



DARK GREY



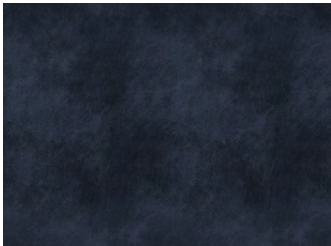
COGNAC



TABACCO



STONE



DARK BLUE



BACK TO
INDEX

PURE

LEATHER

Natural leather.

Composition | 100% leather

Martindale | –

Lightfastness | 5

Pilling | –



DIAMONDS

CAT Leather A



BRIGHT WHITE
Stitching Silk Grey



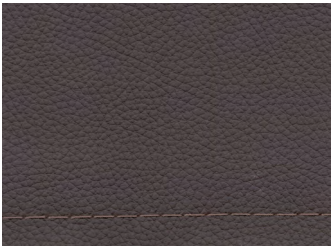
CORNSTALK
Stitching Stone Grey



STING
Stitching Bisque



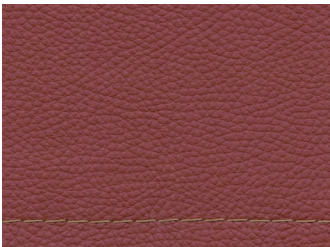
WALNUT
Stitching Stone Grey



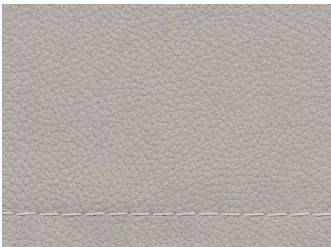
CHOCOLATE
BROWN
Stitching Bisque



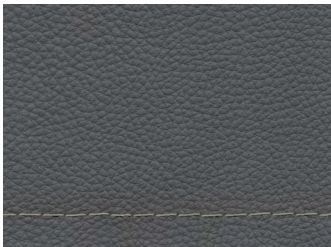
COPPER BROWN
Stitching Cafe



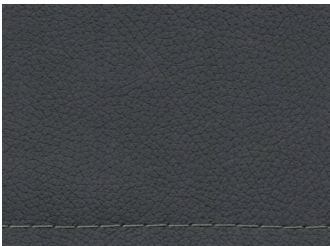
KARANDA RED
Stitching Latte



ASH
Stitching White



ANTRACITE
Stitching Grey Aluminium



BRISTOL BLACK
Stitching Grey



BACK TO
INDEX

Composition | 100% leather
Martindale | –
Lightfastness | 4–5
Pilling | –



GRANADA

CAT Leather B



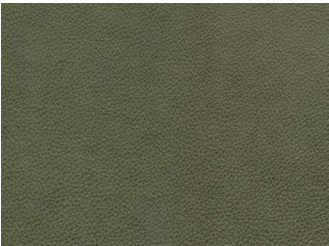
SAVANNAH



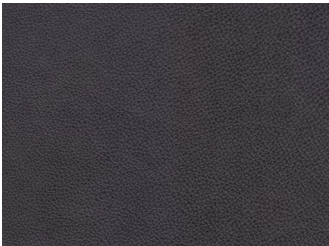
TAUPE



ASH



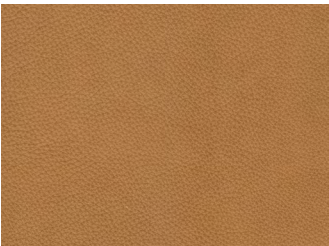
MOSS



GRAPHITE



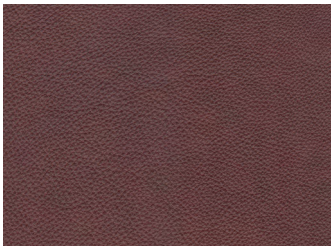
STEEL



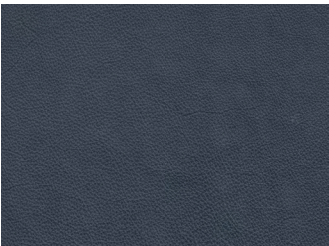
SAHARA



OLIVE



COGNAC



BLUE



BACK TO
INDEX

Composition | 100% aniline leather

Martindale | –

Lightfastness | 3

Pilling | –



VINTAGE

CAT Leather B



COGNAC



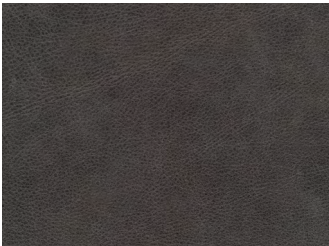
BROWN



OLIVE



TAUPE



GREY



PURE

NATURE

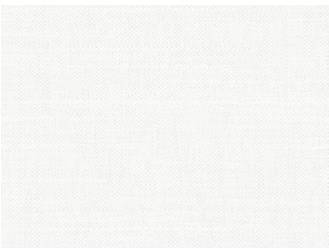
Natural fibers.

Composition | 63% CO, 37% LI
Martindale | 32 500
Lightfastness | 3
Pilling | 4

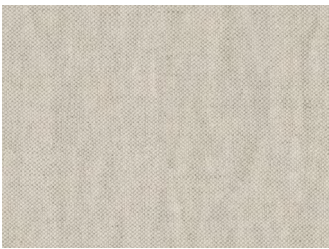


SANDSTONE

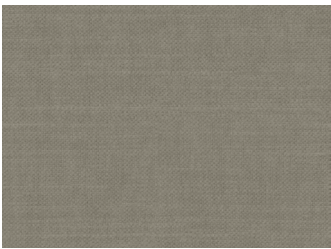
CAT 4



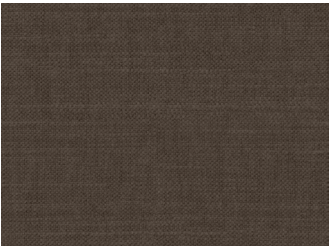
BRIGHT WHITE



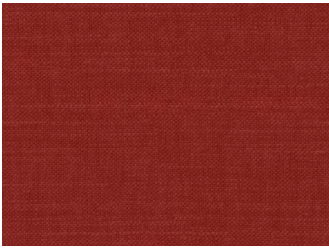
PARCHMENT



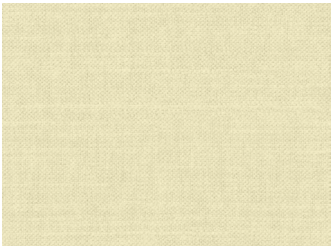
ALUMINIUM



CHOCOLATE BROWN



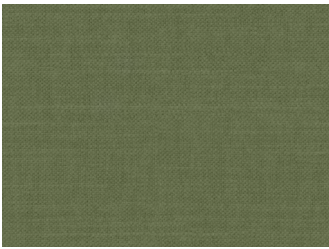
COPPER BROWN



SMOKE GREY



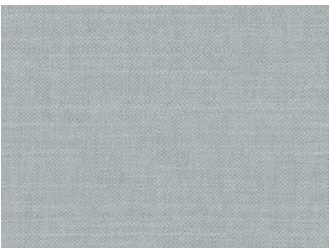
CORNSTALK



TEA



BLUE NIGHTS



MIRAGE GREY



ASH



ROUGH

STRUCTURE

Fabrics with character.

Composition | 53% PES, 35% PAN, 6% CO, 6% CV

Martindale | 25 000

Lightfastness | 4-5

Pilling | 4-5



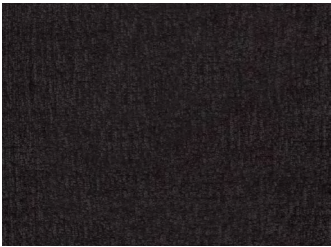
ALIS

CAT 2

Chenille fabric



BEIGE



ANTRACIT



GREEN



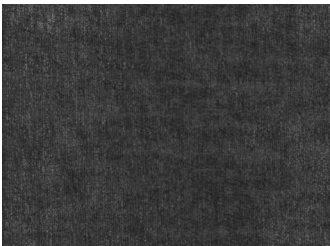
ECRU



MIDNAITT



GRA



GRAFIT



LYS GRA



CINNAMON



BACK TO
INDEX

Composition | 100% PES
Martindale | 100 000
Lightfastness | 5
Pilling | 5



BERGEN

CAT 2



BRIGHT WHITE



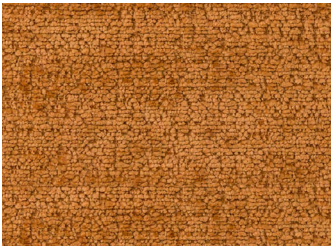
RAINY DAY



NOUGAT



CORNSTALK



TOBACCO BROWN



BRISTOL BLACK



STAPLE GREY



JET STREAM

Composition | 100% PES
Martindale | 100 000
Lightfastness | 4-5
Pilling | 4



COLTAN

CAT 3
Boucle fabric



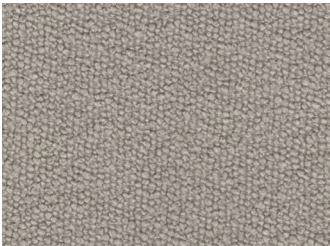
BRIGHT WHITE



RAINY DAY



CORNSTALK



ALUMINUM



CHOCOLATE
BROWN



COPPER BROWN



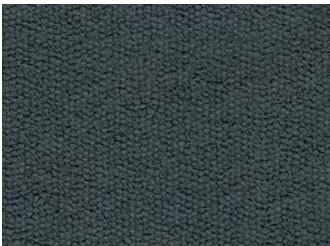
MYRTLE



BLUE NIGHTS



ASH



BRISTOL BLACK



Composition | 100% PES

Martindale | 85 000

Lightfastness | 5

Pilling | 4-5



FUSION

CAT 2

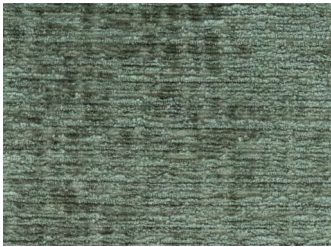
Chenille fabric



INDIGO



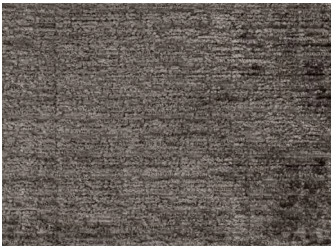
CREAM



THYME



ANTHRACITE



WOOD



BRANDY



ARMY



COGNAC



Composition | 100% PES

Martindale | 100 000

Lightfastness | 5

Pilling | 4-5



GARNET

CAT 3

Chenille fabric



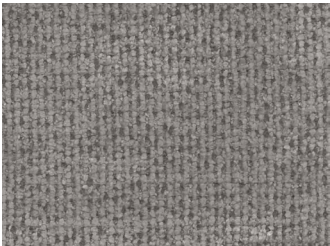
BRIGHT WHITE



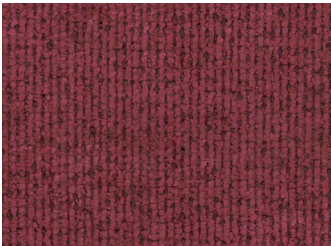
ALUMINIUM



CORNSTALK



MOON ROCK



KARANDA RED



MYRTLE



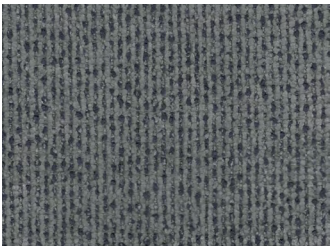
SMOKE BLUE



BLUE NIGHTS



ASH



STEEL GREY



BACK TO
INDEX

Composition | 90% PES, 10% N

Martindale | 40 000

Lightfastness | 4

Pilling | 4



MARBLE

CAT 1

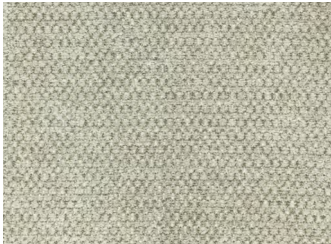
Micro Chenille fabric



PASTEL
PARCHMENT



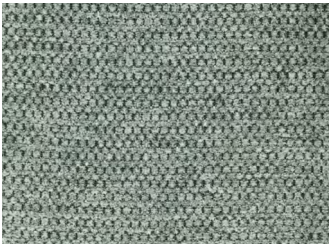
RAINY DAY



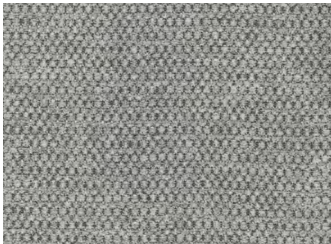
SILVER BIRCH



PINENEEDLE



MIRAGE GREY



ASH



SMOKE BLUE



STEEL GREY



MOONLESS
NIGHT



BACK TO
INDEX

Composition | 100% PES
Martindale | 100 000
Lightfastness | 5
Pilling | 4

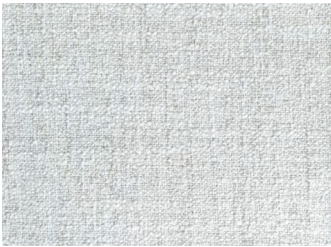


OASIS

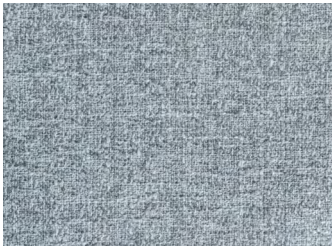
CAT 2
Chenille fabric



SHELL



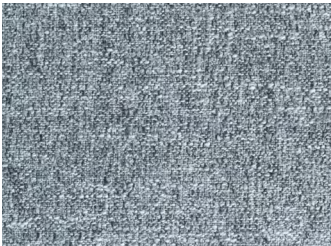
NATUREL



ASH GREY



DARK BLUE



GREY



WOOD



TURTLE



LAVA



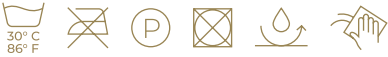
BACK TO
INDEX

Composition | 48% PES, 37% PAN, 8% CO, 7% WO

Martindale | 35 000

Lightfastness | 5

Pilling | 3-4



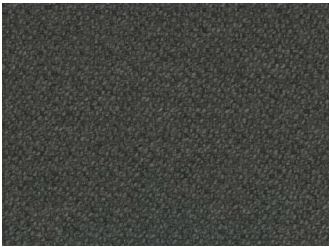
TAFFIE

CAT 4

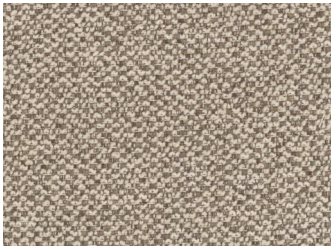
Boucle fabric



ECRU



GRAFFIT



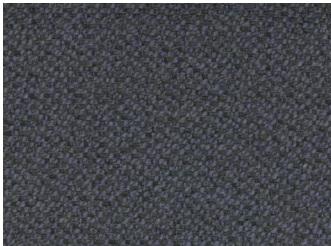
LATTE



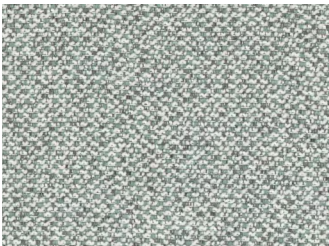
SILVER



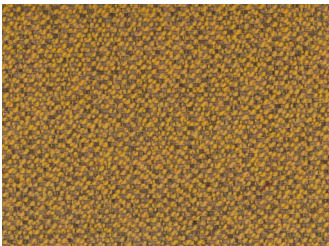
GREEN



GRÅ



GRANIT



YELLOW



BACK TO
INDEX

SIMPLY

NORDIC

Scandinavian inspired fabrics.

Composition | 100% PES

Martindale | 115 000

Lightfastness | 4-5

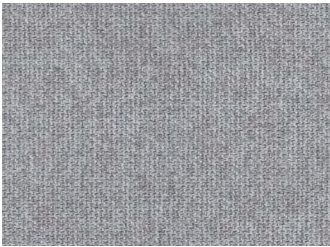
Pilling | 4



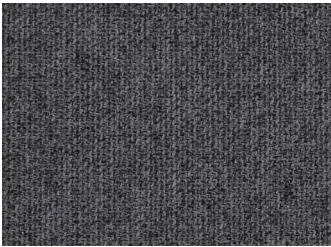
AUSTIN

CAT 2

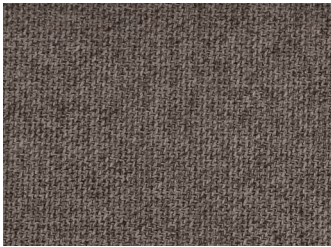
Micro Chenille fabric



LYS GRÅ



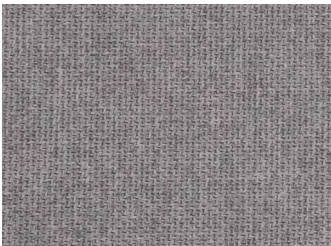
GRÅ



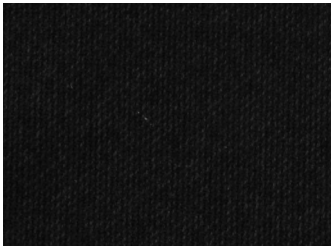
MULDVAD



BEIGE



SILVER



SORT



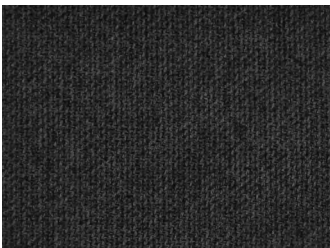
GOLDEN
YELLOW



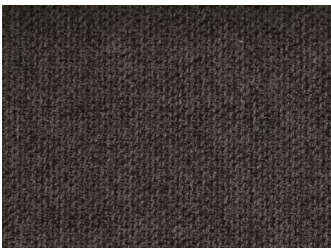
GRØNN



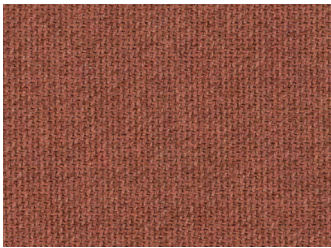
DYP BLÅ



MØRK GRÅ



BRUN



RUST



BACK TO
INDEX

Composition | 100% PES

Martindale | 50 000

Lightfastness | 5

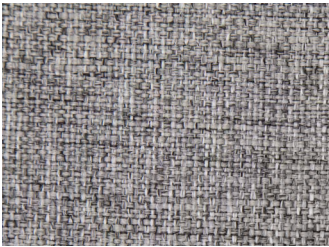
Pilling | 4-5



CASA

CAT1

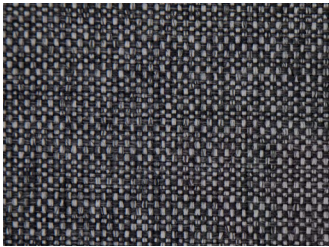
Flat woven fabric



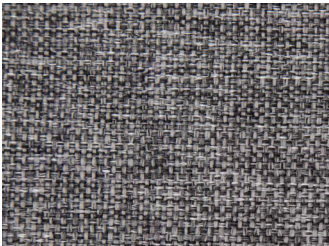
STONE



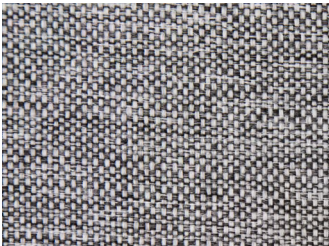
NIGHT



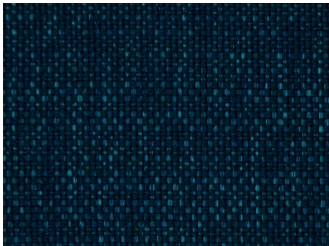
GRANIT



DARK GREY



SILVER



BLUE



TAUPE



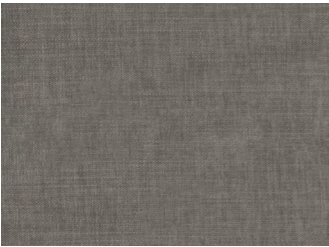
BACK TO
INDEX

Composition | 100% PES
Martindale | 35 000
Lightfastness | 4-5
Pilling | 4



ETON

CAT 2
Chenille fabric



LIGHT GREY



WATER GREEN



CEMENT



ASH



TRUFA



SKY



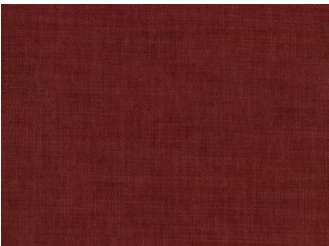
MOUSE



TURQUOISE



PINK



RED



BACK TO
INDEX

Composition | 100% PES
Martindale | 85 000
Lightfastness | 5
Pilling | 4

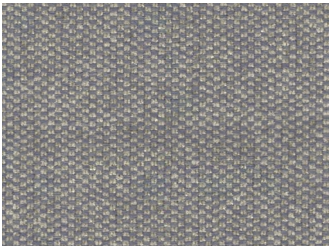


HAWKS

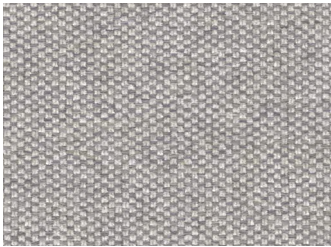
CAT 2
Chenille fabric



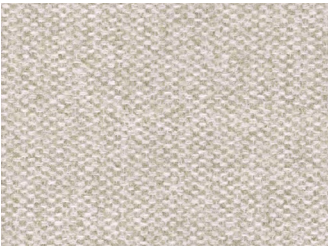
ASH



MIRAGE GREY



MOONSTRUCK



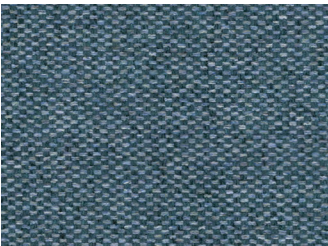
PASTEL
PARCHMENT



MOONLESS
NIGHT



STEEL GREY



INFINITY

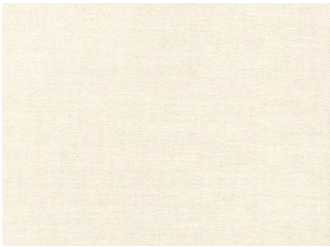


Composition | 100% PES
Martindale | 100 000
Lightfastness | 4-5
Pilling | 4



HONEY

CAT 3



JET STREAM



CORNSTALK



PINE BARK



SPICED APPLE



MOONSTONE



MARTINI OLIVE



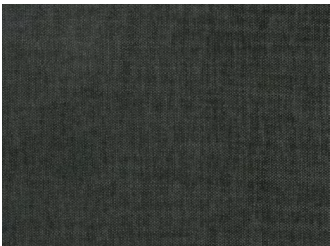
URBAN CHIC



PALOMA



MOON ROCK



PISTOL BLACK

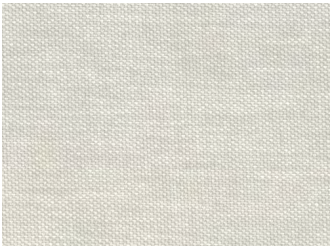


Composition | 100% PES
Martindale | 100 000
Lightfastness | 4
Pilling | 4-5



LAPIS

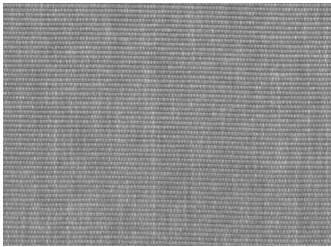
CAT 2
Chenille fabric



PARCHMENT



SMOKE GREY



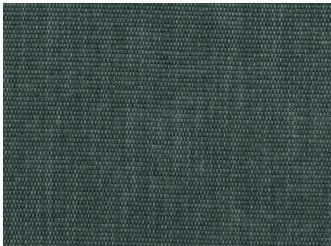
KHAKI



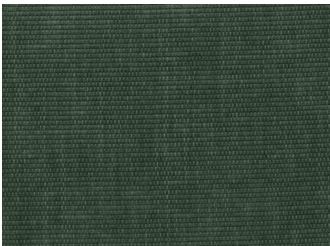
PINE BARK



COPPER BROWN



URBAN GREEN



WILLOW BOUGH



BRISTOL BLACK

Composition | 92% PES, 8% N
Martindale | 40 000
Lightfastness | 5
Pilling | 5



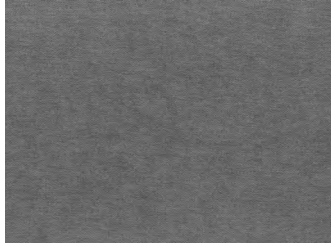
LIDO

CAT 2

Micro chenille fabric



ANTRACIT



GREY



LIGHT BROWN



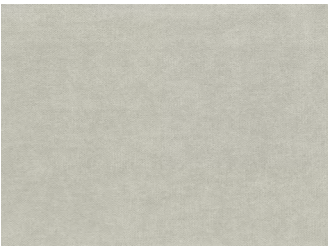
INK BLUE



BEIGE



CUSTARD



LIGHT GREY



BROWN



OLIVE



MARINE



BACK TO
INDEX

Composition | 100% PES

Martindale | 35 000

Lightfastness | 4-5

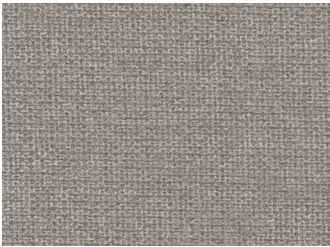
Pilling | 4-5



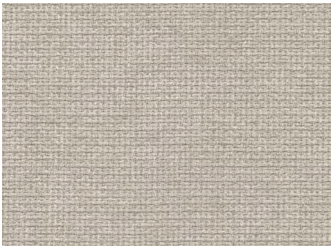
LIVALE

CAT 2

Chenille fabric



BEIGE



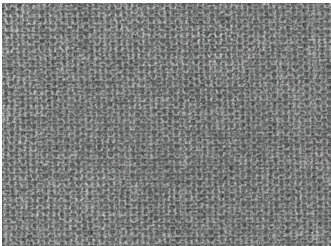
ECRU



BLUE



DARK GREY



GRANITE



FOREST

Composition | 95% PES, 5% CO

Martindale | 55 000

Lightfastness | 4

Pilling | 4



NATRON

CAT 4

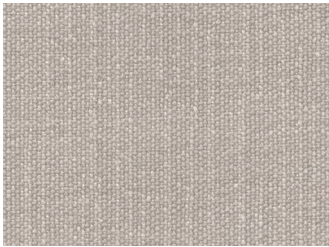
Chenille fabric



BRIGHT WHITE



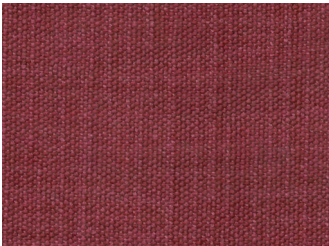
SMOKE GREY



ALUMINIUM



STUCCO



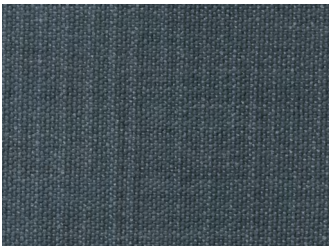
MARSALA



CORNSTALK



PINENEEDLE



BLUE NIGHTS



ASH



STEEL GREY



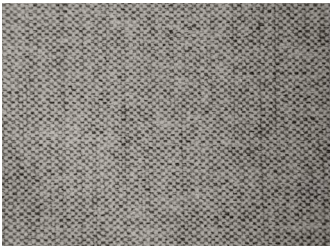
BACK TO
INDEX

Composition | 100% PES
Martindale | 50 000
Lightfastness | 5
Pilling | 4-5

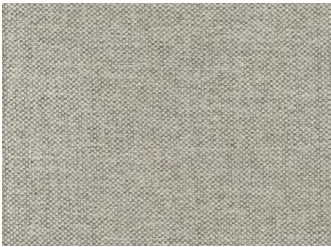


NORDBY

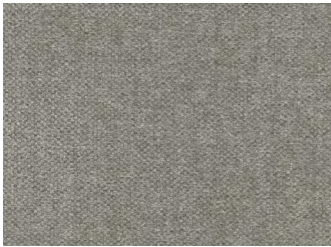
CAT 2
Chenille fabric



GREY



WHITE



SILVER



ASH



STEEL



PETROL



ALU



NAVY



GREEN



Composition | 66% RPP, 34% PES

Martindale | 35 000

Lightfastness | 5

Pilling | 5



OPAL

CAT 3

Chenille fabric



LINEN



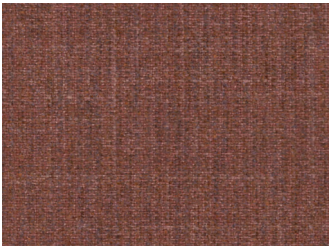
ALUMINIUM



MOON ROCK



CHOCOLATE
BROWN



COPPER BROWN



BLUE NIGHTS



ASH



STEEL GREY



Composition | 46% PAN, 36% PES, 18% PV
Martindale | 35 000
Lightfastness | 4-5
Pilling | 4-5



PAROS

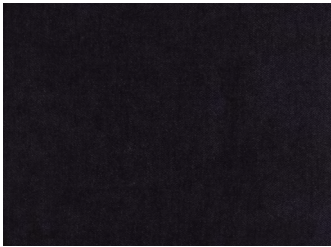
CAT 2
Chenille fabric



SAND



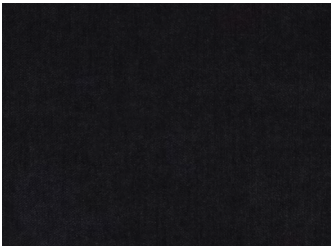
LIGHT GREY



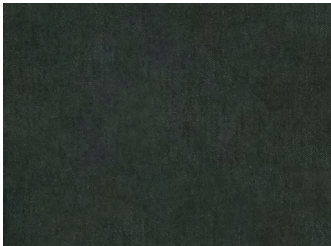
MARINE



IVORY



MIDNIGHT BLUE



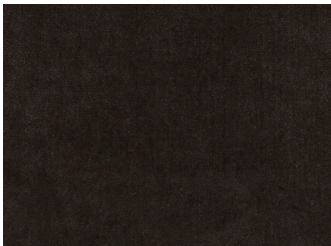
GREEN



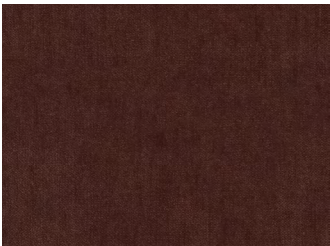
GRAFITT



BLÅ



BROWN



RUST



Composition | 100% PES

Martindale | 100 000

Lightfastness | 4

Pilling | 4



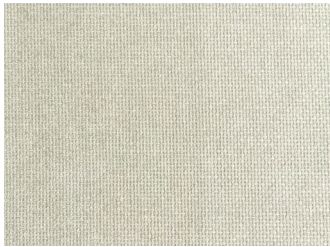
ROCKY CRYSTAL

CAT1

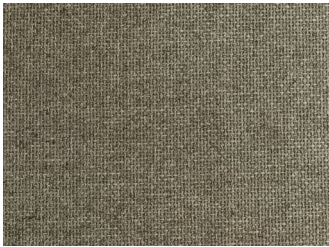
Flat woven fabric



MOONSTRUCK



RAINY DAY



ALUMINIUM



MARSALA



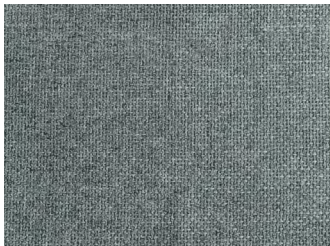
BLUE NIGHTS



SMOKE BLUE



ASH



STEEL GREY

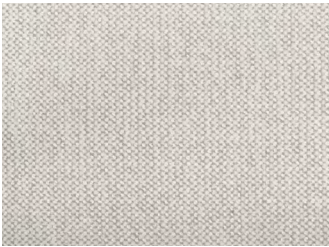


Composition | 100% PES
Martindale | 38 000
Lightfastness | 4-5
Pilling | 4-5

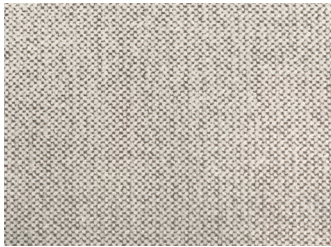


SNEAK

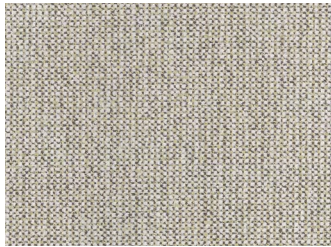
CAT 2
Chenille fabric



MOONSTRUCK



STUCCO



GINGER ROOT



SESAME



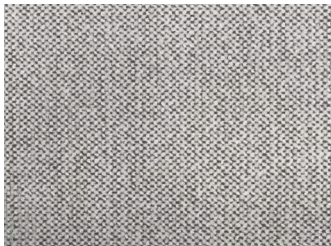
CORNSTALK



LIVER



DUSTY CLAY



STEEL GREY



STEEL



GREY



ANTHRACITE



Composition | 85% PES, 15% CO

Martindale | 35 000

Lightfastness | 4-5

Pilling | 4-5



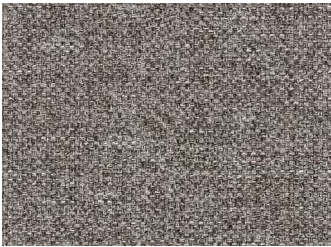
UNIT

CAT 2

Flat woven fabric



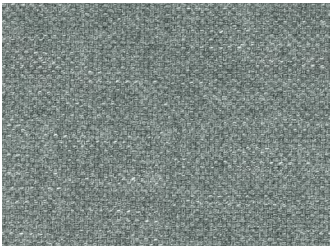
LIGHT GREY



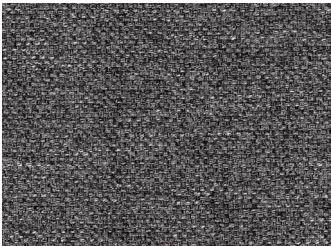
STONE



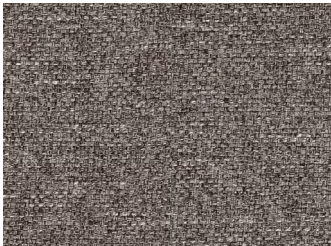
SESAME



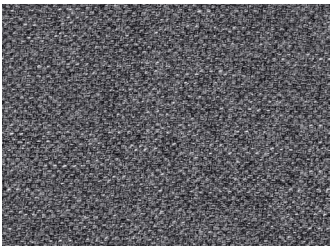
AQUA



DARK GREY



TAUPE



DENIM



ANTHRACITE



BROWN



BACK TO
INDEX

SMOOTH

VELVET

Woven and knitted velvet.

Composition | 100% PES
Martindale | 88 000
Lightfastness | 5
Pilling | 5



ADORE

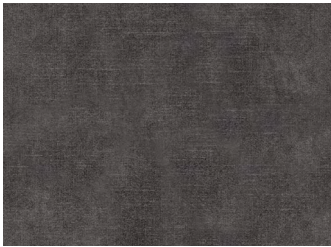
CAT 2



ANTHRACITE



HUNTER



DARK GREY



GOLD



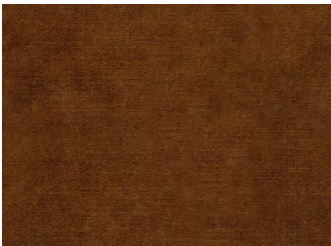
PETROL



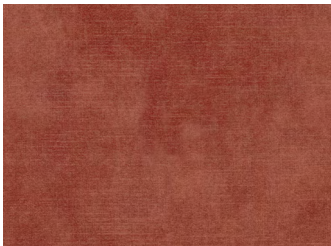
COPPER



STEEL



COGNAC



BLUSH



INDIGO



MOSS



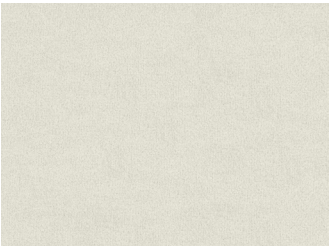
BACK TO
INDEX

Composition | 100% PES
Martindale | 100 000
Lightfastness | 4
Pilling | 4-5

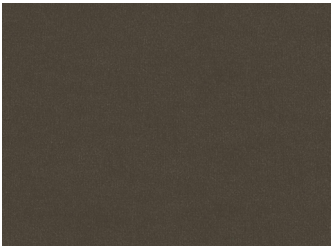


SEVEN

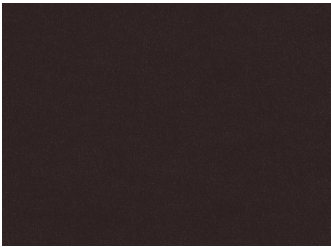
CAT 2



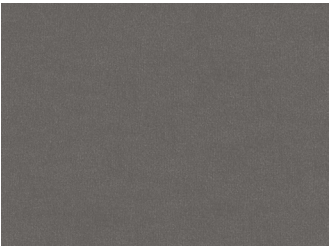
IVORY



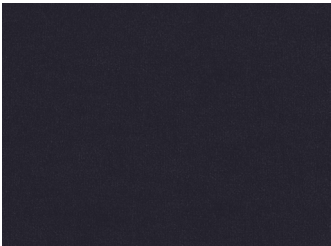
SHITAKE



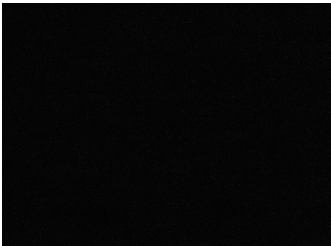
LIVER



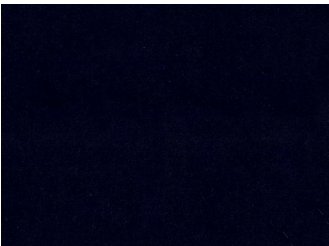
DOLPHIN



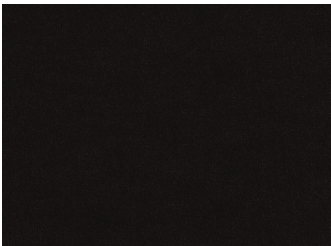
ANTHRACITE



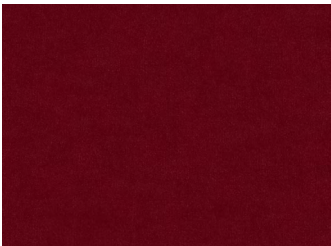
ONYX



DARK BLUE



ESPRESSO



SCARLET



Composition | 81% PES, 19% PV

Martindale | 45 000

Lightfastness | 4-5

Pilling | 4-5

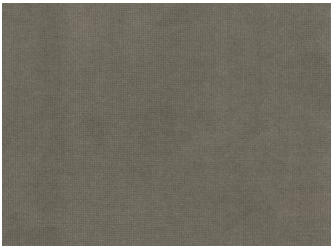


VELVETLUX

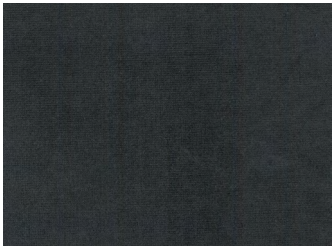
CAT 4



MIDNIGHT BLUE



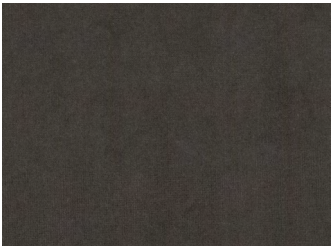
SAND



ANTHRACITE



DUSTY GREEN



DARK BROWN



NAVY BLUE



OKER



PETROL

CHUNKY

CORDUROY

The timeless fabric.

Composition | 100% PES
Martindale | 90 000
Lightfastness | 4
Pilling | 4



ANGELITE

CAT1



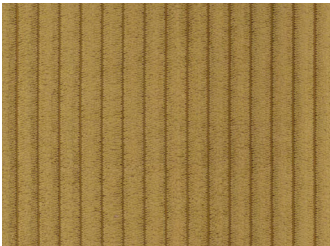
SOLITARY STAR



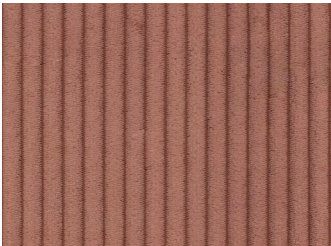
SMOKED GREY



PINE BARK



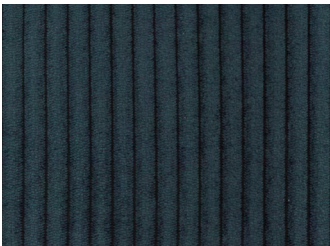
DIJON



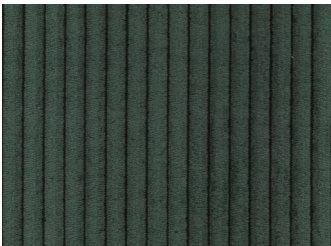
FADED ROSE



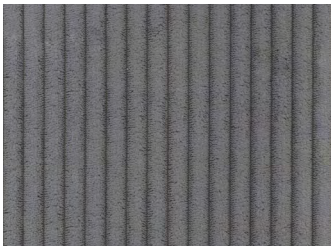
PEARL BLUE



MARITIME BLUE



RIFLE GREEN



IRON

Composition | 92% PES, 8% PAC

Martindale | 45 000

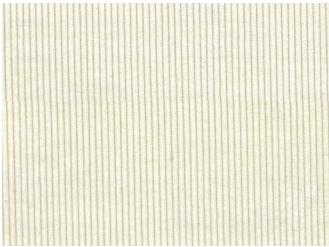
Lightfastness | 4

Pilling | 4-5

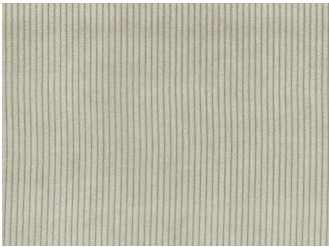


LISBOA

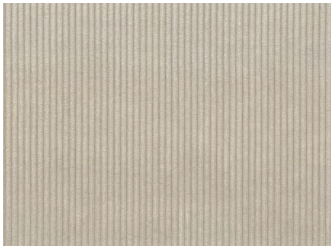
CAT1



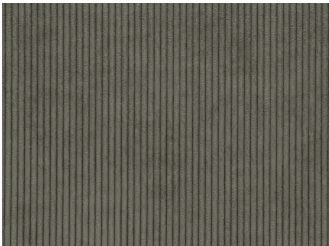
WHITE



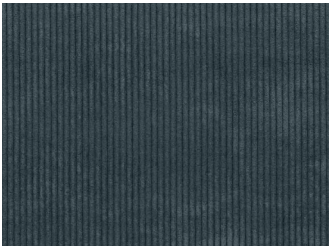
IVORY



SAND



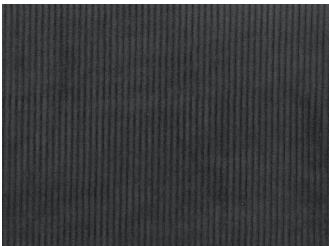
BROWN



DUSTY BLUE



ELEPHANT



ANTRACIT



VILMERS

Rest assured.

