



MASCA

Braveness of *Beauty*



MASCA

*Italian light experience*





MASCA

“Esiste il desiderio di fermare un’emozione per poterla vivere ancora e dividerla con altri”. Ecco che il disegno ferma l’idea, la materia diventa forma, la luce la fa vivere.

Il brand Masca, garanzia di puro Made in Italy, racchiude in sé l’ispirazione dell’artista, la flessibilità dell’artigiano ed il gusto del designer.

I nostri oggetti sono concepiti con spirito innovativo fondendo stili, decori e contaminazioni di culture diverse.

Illuminare con una creazione di Masca significa, quindi, avere il coraggio di inserire un elemento di forte impatto artistico che trasforma un semplice ambiente in uno spazio estetico.

Significa avere il **coraggio della bellezza**.

*“There is a desire to capture an emotion in order to experience it longer and share it with others”.*

*Here the design captures the idea, substance takes shape, and light gives life.*

*The Masca brand, with its Made in Italy guarantee, encompasses the inspiration of the artist, the pliability of the artisan, and the taste of the designer.*

*Our products have been designed with the spirit of innovation combining style, decoration and a fusion of cultures.*

*Lighting your space with a Masca creation means having the courage to install a product with a strong artistic impact which transforms a simple ambient into an aesthetic space.*

*It means having the **braveness of beauty**.*

«Существует желание сохранить эмоцию, что бы пережить ее еще раз и разделить с другими». Вот, что делает чертеж, он сохраняет идею, а материя приобретает форму, которую оживляет свет.

Бренд Masca – это гарантия настоящего «Made in Italy», который воплощает в себе вдохновение творца, универсальность ремесленного искусства и вкус дизайнера.

Наши объекты создаются в духе инноваций, смешения стилей, декора и влияния разных культур.

Осветить пространство творениями Masca означает иметь храбрость внедрить в интерьер элемент, несущий сильный творческий посыл, который превращает обыденность в эстетическое пространство.

Это означает обладать **храбростью красоты**.

**Leonardo Scagli**  
President





ELIZABETH  
*pag. 8*



OPERA  
*pag. 14*



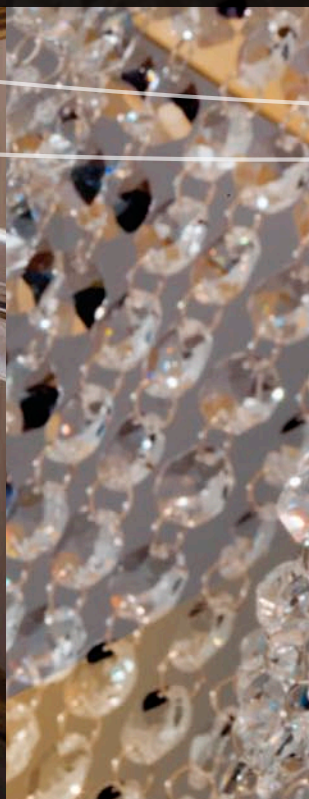
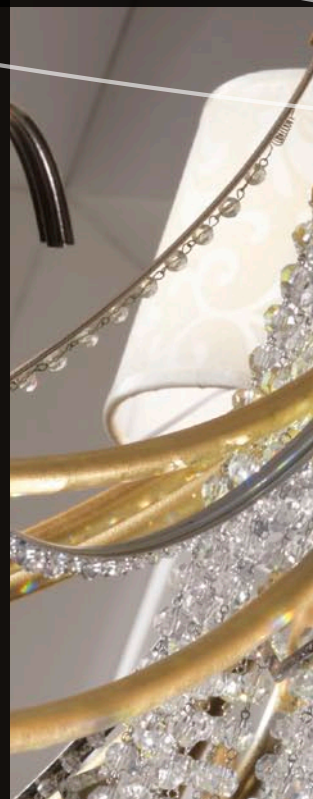
CORINTO  
*pag. 22*



CASHMERE  
*pag. 28*



CHIC  
*pag. 38*



VIE EN ROSE  
*pag. 46*



MOZART  
*pag. 56*



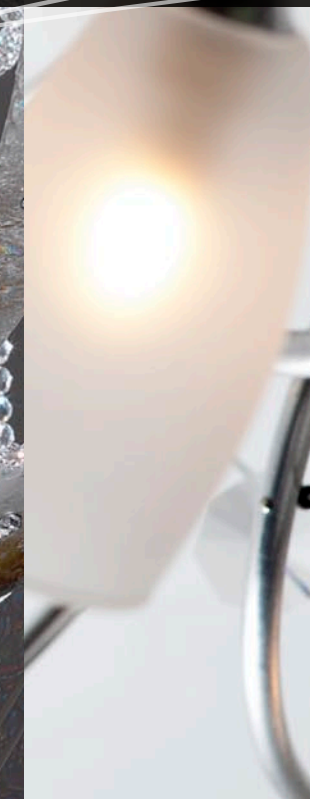
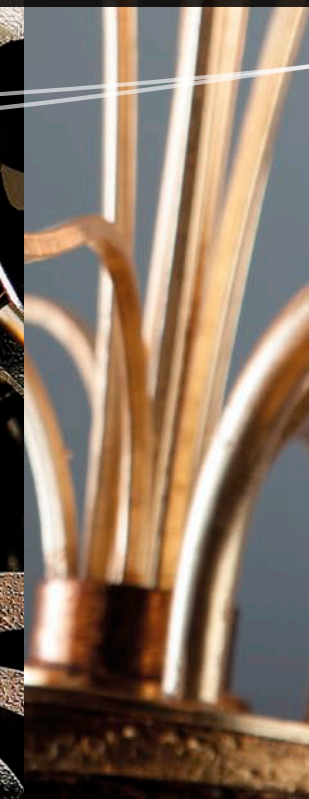
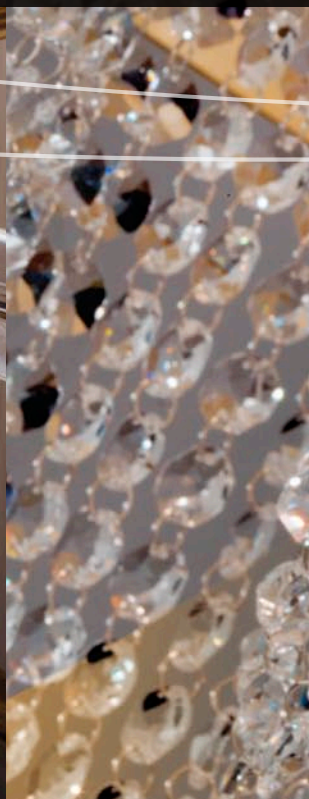
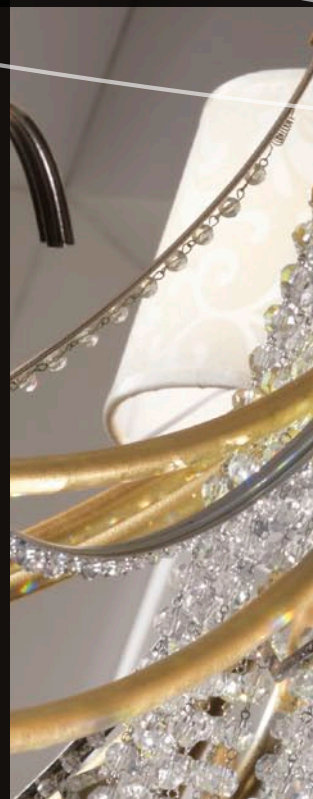
GOTICA  
*pag. 64*



KIKKA  
*pag. 74*



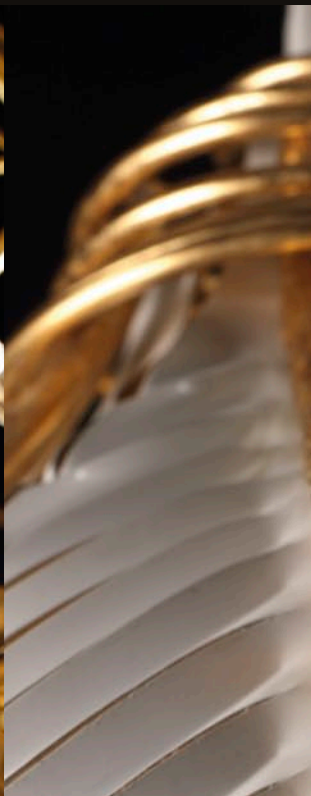
JASMINE  
*pag. 80*







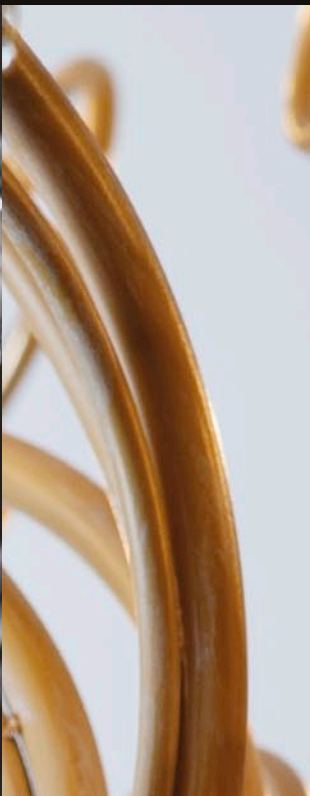
MUGHETTO  
*pag. 86*



OASI  
*pag. 92*



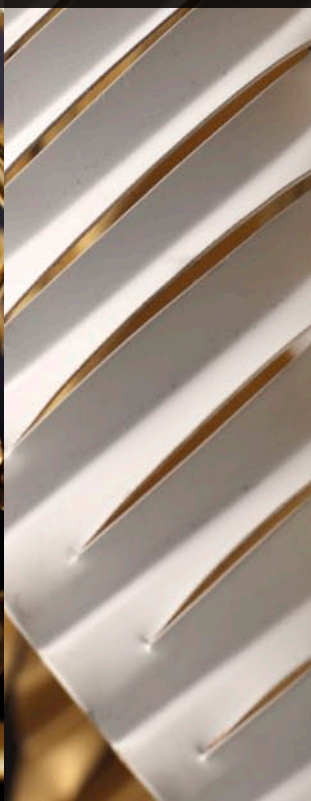
ARTICA  
*pag. 100*



DAMASCO  
*pag. 108*



PEACOCK  
*pag. 118*



Braveness of *Beauty*





# ELIZABETH

*designer*  
Alberto Scagli





← **1866/6 ELIZABETH Argento**  
Ø cm 120x100 h  
6 x max 100W E27 + 3 x 3W LED + 1 x 5W LED

↑ **1866/A2 ELIZABETH Argento**  
h cm 80x83x25  
2 x max 100W E27 + 2 x 3W LED + 1 x 5W LED





← **1866/12 ELIZABETH Oro**  
Ø cm 180x140 h  
12 x max 100W E27 + 5 x 3W LED + 1 x 5W LED





# OPERA

*designer*  
Arch. Leonardo Scagli





↑ **1834/6 OPERA Argento**  
 Ø cm 88x60 h  
 6 x max 60W E14 +  
 Hal max 35W GU10

→ **1834/A2 OPERA Argento**  
 h cm 40x38x22  
 2 x max 60W E14

↗ **1834/6PL OPERA Argento**  
 Ø cm 65x22 h  
 Hal 6 x max 60W G9 +  
 Hal max 35W GU10







→ **1834/16 OPERA Argento**  
Ø cm 120x125 h  
16 x max 60W E14 + Hal max 75W GU10







↑ **1834/12 OPERA Oro**  
 Ø cm 98x85 h  
 12 x max 60W E14 +  
 Hal max 35W GU10

→ **1834/P3 OPERA Argento antico**  
 Ø cm 62x183 h  
 3 x max 60W E14 +  
 Hal max 35W GU10

↗ **1834/SP OPERA Argento antico**  
 Glass 514  
 h cm 168x54







# CORINTO

*designer*  
Arch. Leonardo Scagli





↑ **1841/12 CORINTO Argento ametista**  
Glass 539 - Ø cm 126x80 h  
Hal 12 x max 60W E14 + 6 x 1,2W LED

→ **1841/6 CORINTO Argento ametista**  
Glass 539 - Ø cm 102x72 h  
Hal 6 x max 60W E14 + 6 x 1,2W LED





↑ **1841/A3 CORINTO Oro Argento**  
 Glass 539 - h cm 48x66x52  
 Hal 3 x max 60W E14 + 2 x 1,2W LED



↑ **1841/12 CORINTO Oro Argento**  
 Glass 539 - Ø cm 126x80 h  
 Hal 12 x max 60W E14 + 6 x 1,2W LED



# CASHMERE

*designer*  
Arch. Leonardo Scagli



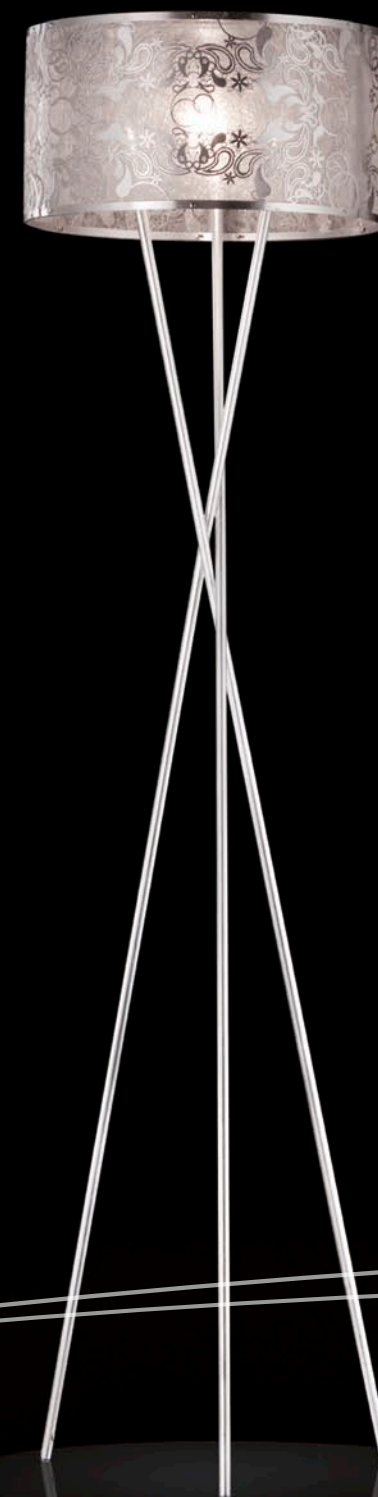


← **1868/A4C CASHMERE Oro**  
h cm 63x30x15  
Hal 4 x max 40W G9



↑ **1868/4C CASHMERE Oro**  
Ø cm 45x60 h  
Hal 3 x max 100W E27 + Hal max 35W GU10





← **1868/13C CASHMERE Argento**  
 Ø cm 75x110 h  
 Hal 12 x max 100W E27 + Hal max 35W GU10

↑ **1868/P1 CASHMERE Argento**  
 Ø cm 55x180 h  
 Hal max 150W E27





↑ **1868/5C CASHMERE Oro**  
 Ø cm 60x65 h  
 Hal 4 x max 100W E27 + Hal max 35W GU10



→ **1868/8C CASHMERE Oro**  
 Ø cm 60x88 h  
 Hal 7 x max 100W E27 + Hal max 35W GU10





← **1868/A4 CASHMERE Argento**  
h cm 23x30x15  
Hal 4 x max 40W G9

↙ **1868/3 CASHMERE Argento**  
Glass 587 - Ø cm 45x26 h  
Hal 3 x max 100W E27

↑ **1868/4 CASHMERE Argento**  
Glass 587 - Ø cm 60x26 h  
Hal 4 x max 100W E27





# CHIC

*designers*

Arch. Marzia Bandini e Arch. Massimo Sacconi





↑ **1831/12 CHIC Nero lucido**  
 Glass 501 - Ø cm 108x70 h  
 Hal 12 x max 40W G9

→ **1831/12 CHIC Nero lucido**  
 Glass 501 - Ø cm 108x70 h  
 Hal 12 x max 40W G9







↖ **1831/A2 CHIC**  
**Bianco lucido**  
Glass 502  
h cm 40x48x26  
Hal 2 x max 40W G9

← **1831/6 CHIC**  
**Bianco lucido**  
Glass 502  
Ø cm 80x65 h  
Hal 6 x max 40W G9

↑ **1831/A1D CHIC**  
**Nero lucido**  
Glass 501  
h cm 40x34x23  
Hal max 40W G9

↓ **1831/B1 CHIC**  
**Nero lucido**  
Glass 501  
Ø cm 14x45 h  
Hal max 40W G9

↑ **1831/A1S CHIC**  
**Nero lucido**  
Glass 501  
h cm 40x34x23  
Hal max 40W G9







↑ **1831/6 CHIC Oro**  
Glass 503 - Ø cm 80x65 h  
Hal 6 x max 40W G9

↓ **1831/B1 CHIC Oro**  
Glass 503 - Ø cm 14x45 h  
Hal max 40W G9

↗ **1831/P CHIC Nero lucido**  
Glass 509 - Ø cm 45x178 h  
Hal max 150W E27

→ **1831/BG CHIC Nero lucido**  
Glass 509 - Ø cm 45x70 h  
Hal max 150W E27







# VIE EN ROSE

*designers*

Arch. Marzia Bandini e Arch. Massimo Sacconi





↑ **1839/SFB VIE EN ROSE Bianco oro**  
 Ø cm 60x65 h  
 8 x max 40W G9 + 16 x 1,2W LED

→ **1839/SF VIE EN ROSE Bianco oro**  
 Ø cm 60  
 8 x max 40W G9 + 16 x 1,2W LED







↑ **1839/SFG VIE EN ROSE Bianco argento**  
Ø cm 120  
8 x max 60W E14 + 36 x 1,2W LED

↗ **1839/MSF VIE EN ROSE Nero nichel**  
Ø cm 60x40 h  
4 x max 40W G9 + 8 x 1,2W LED

→ **1839/SF VIE EN ROSE Nero nichel**  
Ø cm 60  
8 x max 40W G9 + 16 x 1,2W LED







← **1839/6 VIE EN ROSE Nero nichel**  
 Glass 529 - Ø cm 112x80 h  
 6 x max 150W E27 + 13 x 1,2W LED



↑ **1839/6 VIE EN ROSE Bianco oro**  
 Glass 530 - Ø cm 112x80 h  
 6 x max 150W E27 + 13 x 1,2W LED





← **1839/MSFG VIE EN ROSE Bianco oro**  
Ø cm 120x60 h  
4 x max 60W E14 + 18 x 1,2W LED

↑ **1839/SFG VIE EN ROSE Bianco oro**  
Ø cm 120  
8 x max 60W E14 + 36 x 1,2W LED



# MOZART

*designer*  
Arch. Leonardo Scagli





↑ **1874/8 MOZART Argento patinato**  
 Ø cm 95x65 h  
 8 x max 60W E14

↗ **1874/A2 MOZART Argento patinato**  
 h cm 37x53x24  
 2 x max 60W E14

→ **1874/A1 MOZART Argento patinato**  
 h cm 37x30x25  
 max 60W E14







← **1874/16 MOZART Oro cannella**  
Ø cm 136x90 h  
16 x max 60W E14

↑ **1874/5PL MOZART Oro cannella**  
Ø cm 70x22 h  
Hal 5 x max 40W G9





← **1874/5 MOZART Gesso oro**  
 Ø cm 78x50 h  
 5 x max 60W E14



↑ **1874/8PL MOZART Gesso oro**  
 Ø cm 90x25 h  
 8 x max 60W E14





# GOTICA

*designer*

Arch. Leonardo Scagli





← **1846/5 GOTICA Argento platino**  
 Ø cm 80x52 h  
 Hal 5 x max 60W E14



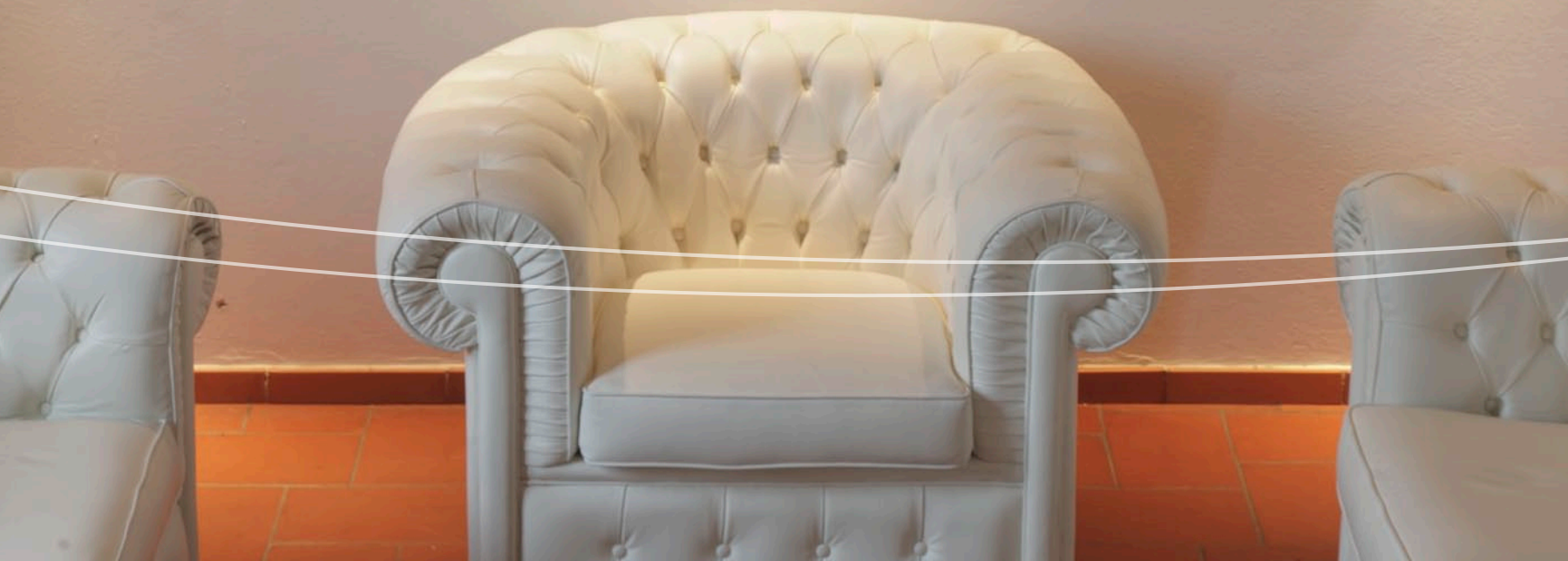
↑ **1846/20 GOTICA Argento fris **  
 Ø cm 120x120 h  
 Hal 20 x max 60W E14





↑ 1846/9 GOTICA Argento platino  
Ø cm 110x70 h  
Hal 9 x max 60W E14





← **1846/9 GOTICA Oro fris **  
 Ø cm 110x70 h  
 Hal 9 x max 60W E14

↑ **1846/12PL GOTICA Oro fris **  
 Ø cm 120x35 h  
 Hal 12 x max 60W E14





↑ **1846/6PL GOTICA Oro fris **  
 Ø cm 67x25 h  
 Hal 6 x max 60W G9

↗ **1846/SP GOTICA Oro fris **  
 Glass 10 - Ø cm 72

→ **1846/A2 GOTICA Oro fris **  
 h cm 44x32x15  
 Hal 2 x max 60W E14







# KIKKA

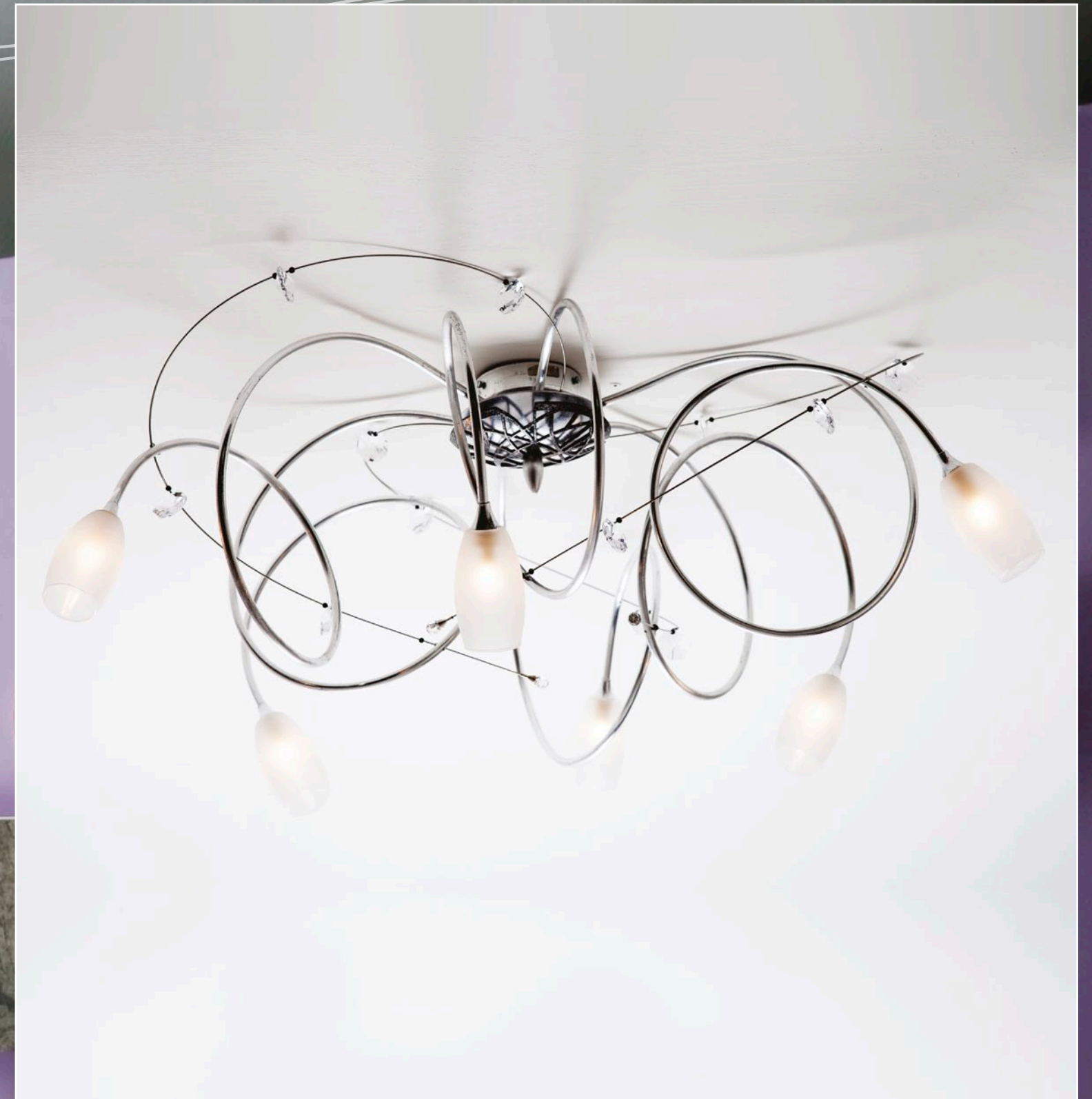
*designers*

Arch. Marzia Bandini e Arch. Massimo Sacconi





↑ **1850/9 KIKKA Argento brunito**  
 Glass 559 - Ø cm 94x60 h  
 Hal 9 x max 40W G9



↑ **1850/6PL KIKKA Argento brunito**  
 Glass 559 - Ø cm 98x35 h  
 Hal 6 x max 40W G9



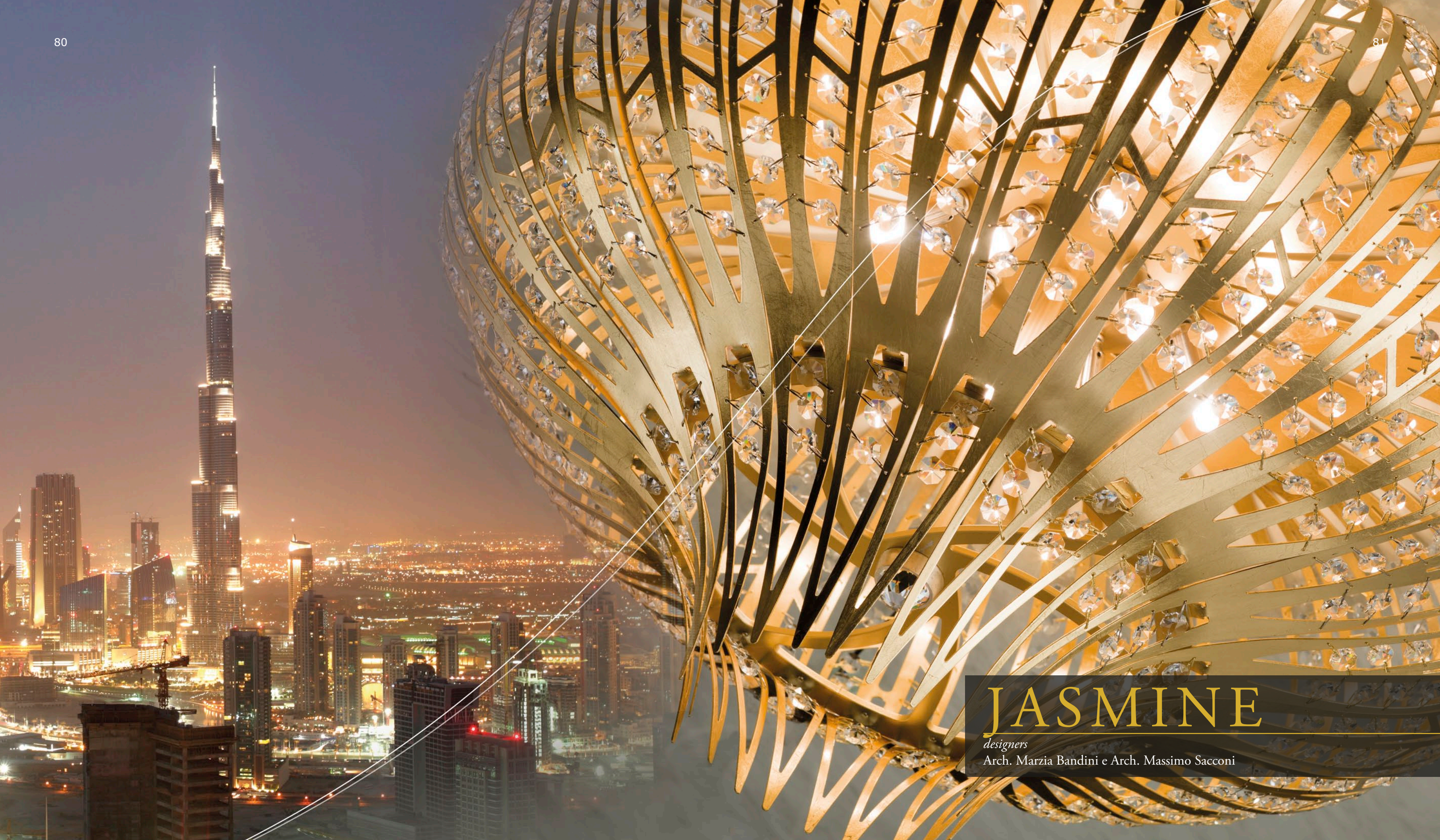


↑ **1850/9PL KIKKA Oro brunito**  
Glass 559 - Ø cm 96x40 h  
Hal 9 x max 40W G9



→ **1850/A2 KIKKA Oro brunito**  
Glass 559 - h cm 35x40x25  
Hal 2 x max 40W G9





# JASMINE

*designers*

Arch. Marzia Bandini e Arch. Massimo Sacconi





↑ **1872/8PL JASMINE Oro**  
 Ø cm 70x40 h  
 Hal 8 x max 40W G9

→ **1872/A5 JASMINE Oro**  
 h cm 70x48x24  
 Hal 5 x max 40W G9







↖ **1872/9 JASMINE Nichel drop**  
Ø cm 70x70 h  
Hal 9 x max 40W G9





# MUGHETTO

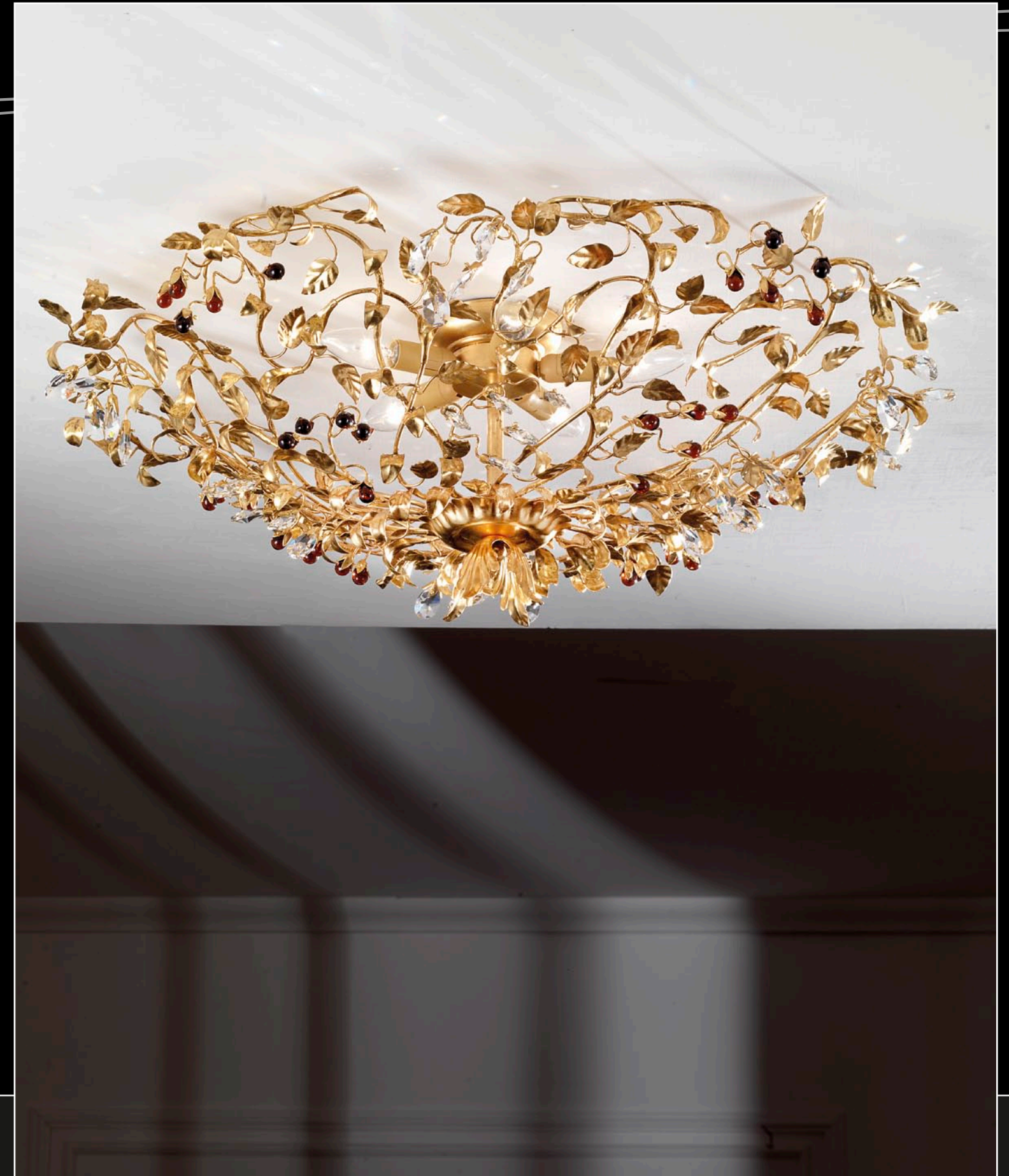
*designer*  
Alberto Scagli





↑ **2835/12 MUGHETTO Oro**  
 Ø cm 120x80 h  
 12 x max 60W E14

→ **2835/5PL MUGHETTO Oro**  
 Ø cm 80x25 h  
 5 x max 60W E14







↑ **2835/8 MUGHETTO Pastello**  
 Ø cm 87x65 h  
 8 x max 60W E14

↗ **2835/5 MUGHETTO Pastello**  
 Ø cm 74x60 h  
 5 x max 60W E14

→ **2835/A2 MUGHETTO Pastello**  
 h cm 60x45x22  
 2 x max 60W E14







# OASI

*designer*

Arch. Leonardo Scagli





← **1852/1S OASI Gesso oro**  
Glass 567 - Ø cm 55x60 h  
Hal max 100W E27 + 3 x 1W strip LED





← **1852/P1 OASI Gesso**  
 Glass 570 - Ø cm 30x200 h  
 Hal max 150W E27 + 1W strip LED



↑ **1852/6PL OASI Gesso**  
 Glass 567-570 - Ø cm 140x15 h  
 Hal 6 x max 100W E27 + 5 x 1W strip LED





↑ **1852/4PL OASI Gesso**  
Glass 567 - Ø cm 110x15 h  
Hal 4 x max 100W E27 + 3 x 1W strip LED

→ **1852/A1P OASI Gesso**  
Glass 567 - h cm 47x18x10  
Hal max 100W E14 + 1W strip LED







# ARTICA

*designer*  
Arch. Leonardo Scagli





↑ **1864/16 ARTICA Argento nero**  
Glass 577 - Ø cm 135x84 h  
Hal 16 x max 60W G9

↗ **1864/8PL ARTICA Argento Nero**  
Glass 577 - Ø cm 100x45 h  
Hal 8 x max 60W G9

→ **1864/A1 ARTICA Argento Nero**  
Glass 577 - h cm 45x20x25  
Hal max 60W G9







↑ **1864/5PL ARTICA Bianco Oro**  
Glass 577 - Ø cm 88x35 h  
Hal 5 x max 60W G9



→ **1864/10 ARTICA Bianco Oro**  
Glass 577 - Ø cm 110x75 h  
Hal 10 x max 60W G9





← **1864/A2 ARTICA Oro cannella**  
Glass 577 - h cm 42x40x25  
Hal 2 x max 60W G9

↑ **1864/5 ARTICA Oro cannella**  
Glass 577 - Ø cm 80x53 h  
Hal 5 x max 60W G9



# DAMASCO

*designer*

Arch. Leonardo Scagli





↑ **1828/12 DAMASCO Oro décapé**  
Ø cm 115x75 h  
12 x max 60W E14

→ **1828/A2 DAMASCO Oro décapé**  
h cm 50x48x23  
2 x max 60W E14





↙ **1828/A1 DAMASCO Oro**  
h cm 41x25x20  
max 60W E14

↑ **1828/SP DAMASCO Oro**  
Glass 99 - h cm 94x59

↓ **1828/C DAMASCO Oro**  
Glass 213 - h cm 60x65x35

→ **1828/8 DAMASCO Oro**  
Ø cm 94x62 h  
8 x max 60W E14







← **1828/8PL DAMASCO Argento**  
 Ø cm 90x32 h  
 8 x max 60W E14



↑ **1828/16 DAMASCO Argento**  
 Ø cm 130x85 h  
 16 x max 60W E14





← **1828/P3 DAMASCO Argento**  
 Ø cm 64x190 h  
 3 x max 60W E14

↑ **1828/5 DAMASCO Argento**  
 Ø cm 78x50 h  
 5 x max 60W E14



# PEACOCK

*designer*

Arch. Leonardo Scagli

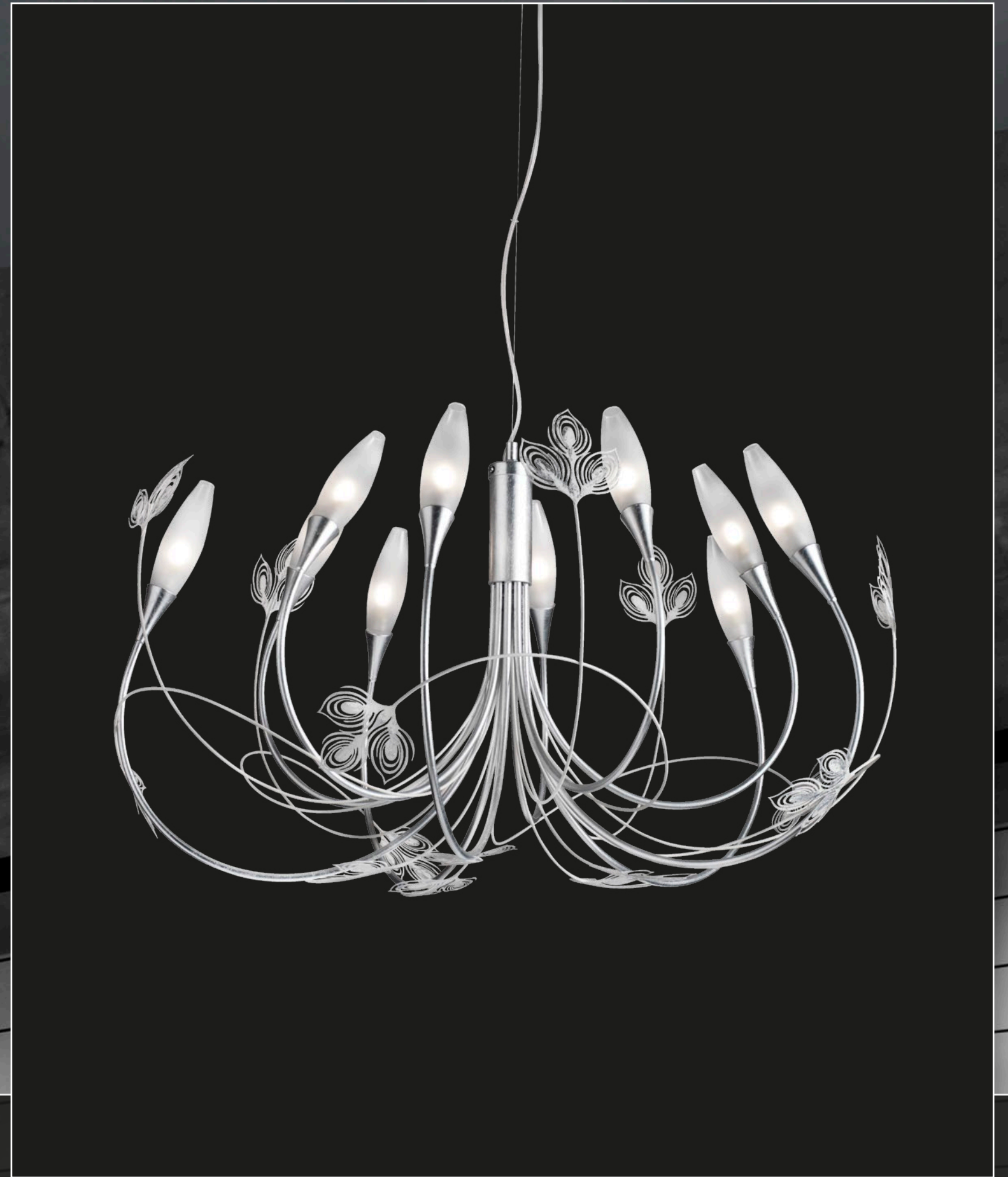




↑ **1869/A2 PEACOCK Argento bianco**  
Glass 591 - h cm 47x28x15  
Hal 2 x max 40W G9

↑ **1869/3PL PEACOCK Argento bianco**  
Glass 591 - Ø cm 43x23 h  
Hal 3 x max 40W G9

→ **1869/10 PEACOCK Argento bianco**  
Glass 591 - Ø cm 80x56 h  
Hal 10 x max 40W G9







← **1869/A1 PEACOCK Oro bianco**  
Glass 591 - h cm 47x18x15  
Hal max 40W G9

↖ **1869/5PL PEACOCK Oro bianco**  
Glass 591 - Ø cm 60x38 h  
Hal 5 x max 40W G9

↑ **1869/6 PEACOCK Oro bianco**  
Glass 591 - Ø cm 60x45 h  
Hal 6 x max 40W G9





Targhetta di garanzia Masca  
Masca warranty label

### Indice

Nelle pagine seguenti sono elencati tutti i prodotti presenti nel catalogo **“Braveness of Beauty”** ordinati per codice di articolo. Nella descrizione viene indicata la tipologia di articolo e i componenti utilizzati.

Tutti gli articoli possono essere realizzati in finiture diverse da quelle suggerite facendone richiesta all’azienda.

Ogni prodotto può essere personalizzato, sia nelle dimensioni che nelle caratteristiche illuminotecniche. Inoltre il nostro project department è in grado di sviluppare prodotti su specifiche indicazioni del cliente.

Su ogni creazione Masca viene applicata un’apposita targhetta con il marchio Masca che ne garantisce l’originalità.

Ogni prodotto è interamente fabbricato a mano. Le eventuali piccole diversità che si possono riscontrare sono la garanzia che ciascun articolo viene fatto in maniera artigianale, rendendolo un pezzo unico.

Masca si riserva di apportare modifiche e/o migliorie a parti o accessori che non alterino sostanzialmente le forme e le caratteristiche estetiche degli articoli presentati nel catalogo.

### Index

The following pages provide a list of all the products of the **“Braveness of Beauty”** catalogue range, in order of item number. There is a description of the product type and the components used. By request, all the items can be made with a variety of fixtures from those suggested.

Each product can be customized both in terms of dimensions and technical characteristics.

Our project department can also develop products to meet specific customer requirements.

Each Masca product is labelled with the Masca brand which guarantees its authenticity.

Masca products are entirely hand made. The small differences that may be observed are a guarantee that each article has been crafted by hand to achieve a unique product.

Masca reserves the right to change and/or improve parts or accessories without substantially altering the shape and the aesthetic characteristics of the products presented in the catalogue.



### DAMASCO

Article	Page	Description	Components/features	Suggested finishing
1828/5	117	5 light chandelier	Swarovski crystal pendants	Argento - Oro - Oro décapé
1828/8	113	8 light chandelier	Swarovski crystal pendants	Argento - Oro - Oro décapé
1828/8PL	114	8 light ceiling lamp	Swarovski crystal pendants	Argento - Oro - Oro décapé
1828/12	110	12 light chandelier	Swarovski crystal pendants	Argento - Oro - Oro décapé
1828/16	115	16 light chandelier	Swarovski crystal pendants	Argento - Oro - Oro décapé
1828/A1	112	1 light wall bracket	Swarovski crystal pendants	Argento - Oro - Oro décapé
1828/A2	111	2 light wall bracket	Swarovski crystal pendants	Argento - Oro - Oro décapé
1828/C	112	console	tempered clear crystal	Argento - Oro - Oro décapé
1828/P3	116	3 light floor lamp	Swarovski crystal pendants	Argento - Oro - Oro décapé
1828/SP	112	mirror		Argento - Oro - Oro décapé



### CHIC

Article	Page	Description	Components/features	Suggested finishing
1831/6	42 - 44	6 light chandelier	Swarovski strass, Schöler pendants, ground glass lampshade	Bianco lucido - Nero lucido - Oro
1831/12	40 - 41	12 light chandelier	Swarovski strass, Schöler pendants, ground glass lampshade	Bianco lucido - Nero lucido - Oro
1831/A1	43 - 44	1 light wall bracket	Swarovski strass, Schöler pendants, ground glass lampshade	Bianco lucido - Nero lucido - Oro
1831/A2	42	2 light wall bracket	Swarovski strass, Schöler pendants, ground glass lampshade	Bianco lucido - Nero lucido - Oro
1831/B1	44	1 light table lamp	Swarovski strass, Schöler pendants, ground glass lampshade	Bianco lucido - Nero lucido - Oro
1831/BG	45	1 light big table lamp	Swarovski strass, Schöler pendants, ground glass lampshade	Bianco lucido - Nero lucido - Oro
1831/P1	45	1 light floor lamp	Swarovski strass, Schöler pendants, ground glass lampshade	Bianco lucido - Nero lucido - Oro



### OPERA

Article	Page	Description	Components/features	Suggested finishing
1834/6	16	6 light chandelier	Swarovski crystal pendants - Schöler crystal bobeches	Argento - Argento antico - Oro
1834/6PL	17	6 light ceiling lamp	Swarovski crystal pendants	Argento - Argento antico - Oro
1834/A2	17	2 light wall bracket	Swarovski crystal pendants - Schöler crystal bobeches	Argento - Argento antico - Oro
1834/12	20	12 light chandelier	Swarovski crystal pendants - Schöler crystal bobeches	Argento - Argento antico - Oro
1834/16	19	16 light chandelier	Swarovski crystal pendants - Schöler crystal bobeches	Argento - Argento antico - Oro
1834/P3	21	3 light floor lamp	Swarovski crystal pendants - Schöler crystal bobeches	Argento - Argento antico - Oro
1834/SP	21	mirror		



### VIE EN ROSE

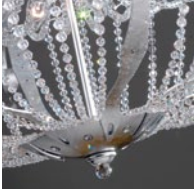
Article	Page	Description	Components/features	Suggested finishing
1839/6	52 - 53	6 light chandelier	Screen printed glass, LED holders in Murano glass, Swarovski crystal pendants	Bianco argento - Bianco oro - Nero nichel
1839/MSF	51	ceiling lamp	Led holders in Murano glass	Bianco argento - Bianco oro - Nero nichel
1839/MSFG	54	ceiling lamp	Led holders in Murano glass	Bianco argento - Bianco oro - Nero nichel
1839/SF	49 - 51	suspension	Led holders in Murano glass	Bianco argento - Bianco oro - Nero nichel
1839/SFB	48	spherical table lamp	Led holders in Murano glass	Bianco argento - Bianco oro - Nero nichel
1839/SFG	50 - 55	big spherical suspension	Led holders in Murano glass	Bianco argento - Bianco oro - Nero nichel



### CORINTO

Article	Page	Description	Components/features	Suggested finishing
1841/6	25	6 light chandelier	Murano glass shade and arms	Argento ametista - Oro argento
1841/12	24 - 27	12 light chandelier	Murano glass shade and arms	Argento ametista - Oro argento
1841/A3	26	3 light wall bracket	Murano glass shade and arms	Argento ametista - Oro argento





## GOTICA

Article	Page	Description	Components/features	Suggested finishing
1846/5	66	5 light chandelier	Murano glass bobech, Swarovski crystal pendants, Swarovski buttons encased	Argento frisé - Argento platino - Oro frisé
1846/6PL	72	6 light ceiling lamp	Swarovski crystal pendants, Swarovski buttons encased	Argento frisé - Argento platino - Oro frisé
1846/9	69 - 70	9 light chandelier	Murano glass bobech, Swarovski crystal pendants, Swarovski buttons encased	Argento frisé - Argento platino - Oro frisé
1846/12PL	71	12 light ceiling lamp	Swarovski crystal pendants, Swarovski buttons encased	Argento frisé - Argento platino - Oro frisé
1846/20	67	20 light chandelier	Swarovski crystal pendants, Swarovski buttons encased	Argento frisé - Argento platino - Oro frisé
1846/A2	73	2 light wall bracket	Murano glass bobech, Swarovski crystal pendants, Swarovski buttons encased	Argento frisé - Argento platino - Oro frisé
1846/SP	73	mirror	Swarovski buttons encased	Argento frisé - Argento platino - Oro frisé



## KIKKA

Article	Page	Description	Components/features	Suggested finishing
1850/6PL	77	6 light ceiling lamp	Schöler crystals	Argento brunito - Oro brunito
1850/9	76	9 light chandelier	Schöler crystals	Argento brunito - Oro brunito
1850/9PL	78	9 light ceiling lamp	Schöler crystals	Argento brunito - Oro brunito
1850/A2	79	2 light wall bracket	Schöler crystals	Argento brunito - Oro brunito



## OASI

Article	Page	Description	Components/features	Suggested finishing
1852/1S	94	1 light suspension	Decorated Murano glass	Gesso oro - Gesso
1852/4PL	98	4 light ceiling lamp	Decorated Murano glass	Gesso
1852/6PL	97	6 light ceiling lamp	Decorated Murano glass	Gesso
1852/A1P	99	1 light small wall bracket	Decorated Murano glass	Gesso
1852/P1	96	1 light floor lamp	Decorated Murano glass, basement in marble from Carrara	Gesso



## ARTICA

Article	Page	Description	Components/features	Suggested finishing
1864/5	107	5 light chandelier	Murano glass	Argento nero - Bianco oro - Oro cannella
1864/5PL	104	5 light ceiling lamp	Murano glass	Argento nero - Bianco oro - Oro cannella
1864/8PL	103	8 light ceiling lamp	Murano glass	Argento nero - Bianco oro - Oro cannella
1864/10	105	10 light chandelier	Murano glass	Argento nero - Bianco oro - Oro cannella
1864/16	102	16 light chandelier	Murano glass	Argento nero - Bianco oro - Oro cannella
1864/A1	103	1 light wall bracket	Murano glass	Argento nero - Bianco oro - Oro cannella
1864/A2	106	2 light wall bracket	Murano glass	Argento nero - Bianco oro - Oro cannella



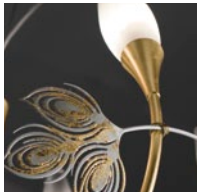
## ELIZABETH

Article	Page	Description	Components/features	Suggested finishing
1866/6	10	6 light chandelier	Schöler crystal bobech and pendants - Asfour crystal chains and pendants - Swarovski strass - crude silk shades	Argento - Oro
1866/12	12	12 light chandelier	Schöler crystals and pendants - Asfour crystal chains and pendants Swarovski strass - crude silk shades	Argento - Oro
1866/A2	11	2 light wall bracket	Schöler crystals and pendants - Asfour crystal chains and pendants Swarovski strass - crude silk shades	Argento - Oro



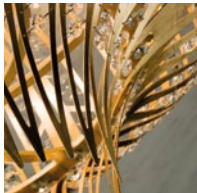
## CASHMERE

Article	Page	Description	Components/features	Suggested finishing
1868/3	36	3 light suspension	Silk lamina lampshade with an engraved cashmere-motif frieze, frosted glass plate	Argento - Oro
1868/4	37	4 light suspension	Silk lamina lampshade with an engraved cashmere-motif frieze, frosted glass plate	Argento - Oro
1868/4C	31	4 light suspension with crystal pendants	Silk lamina lampshade with an engraved cashmere-motif frieze, Asfour crystal octagons chains	Argento - Oro
1868/5C	34	5 light suspension with crystal pendants	Silk lamina lampshade with an engraved cashmere-motif frieze, Asfour crystal octagons chains	Argento - Oro
1868/8C	35	8 light suspension with crystal pendants	Silk lamina lampshade with an engraved cashmere-motif frieze, Asfour crystal octagons chains	Argento - Oro
1868/13C	32	13 light suspension with crystal pendants	Silk lamina lampshade with an engraved cashmere-motif frieze, Asfour crystal octagons chains	Argento - Oro
1868/A4	36	4 light wall bracket	Silk lamina lampshade -adorned with an engraved cashmere-motif frieze	Argento - Oro
1868/A4C	30	4 light wall bracket with crystal pendants	Silk lamina lampshade with an engraved cashmere-motif frieze, Asfour crystal octagons chains	Argento - Oro
1868/P1	33	1 light floor lamp	Silk lamina lampshade -adorned with an engraved cashmere-motif frieze	Argento - Oro



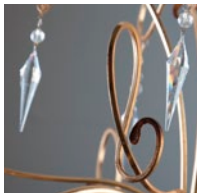
## PEACOCK

Article	Page	Description	Components/features	Suggested finishing
1869/3PL	120	3 light ceiling lamp		Argento bianco - Oro bianco
1869/5PL	122	5 light ceiling lamp		Argento bianco - Oro bianco
1869/6	123	6 light chandelier		Argento bianco - Oro bianco
1869/10	121	10 light chandelier		Argento bianco - Oro bianco
1869/A1	122	1 light wall bracket		Argento bianco - Oro bianco
1869/A2	120	2 light wall bracket		Argento bianco - Oro bianco



## JASMINE

Article	Page	Description	Components/features	Suggested finishing
1872/8PL	82	8 light ceiling lamp	Asfour crystal octagons or Swarovski crystal octagons	Nichel drop - Oro
1872/9	84	9 light suspension	Asfour crystal octagons or Swarovski crystal octagons	Nichel drop - Oro
1872/A5	83	5 light wall bracket	Asfour crystal octagons or Swarovski crystal octagons	Nichel drop - Oro



## MOZART

Article	Page	Description	Components/features	Suggested finishing
1874/5	62	5 light chandelier	Swarovski crystal pendants	Argento patinato - Gesso oro - Oro cannella
1874/5PL	61	5 light ceiling lamp	Swarovski crystal pendants	Argento patinato - Gesso oro - Oro cannella
1874/8	58	8 light chandelier	Swarovski crystal pendants	Argento patinato - Gesso oro - Oro cannella
1874/8PL	63	8 light ceiling lamp	Swarovski crystal pendants	Argento patinato - Gesso oro - Oro cannella
1874/16	60	16 light chandelier	Swarovski crystal pendants	Argento patinato - Gesso oro - Oro cannella
1874/A1	59	1 light wall bracket	Swarovski crystal pendants	Argento patinato - Gesso oro - Oro cannella
1874/A2	59	2 light wall bracket	Swarovski crystal pendants	Argento patinato - Gesso oro - Oro cannella



## MUGHETTO

Article	Page	Description	Components/features	Suggested finishing
2835/5	91	5 light chandelier	Schöler crystal almond - Murano glass pearls	Pastello - Oro
2835/5PL	89	5 light ceiling lamp	Schöler crystal almond - Murano glass pearls	Pastello - Oro
2835/8	90	8 light chandelier	Schöler crystal almond - Murano glass pearls	Pastello - Oro
2835/12	88	12 light chandelier	Schöler crystal almond - Murano glass pearls	Pastello - Oro
2835/A2	91	2 light wall bracket	Schöler crystal almond - Murano glass pearls	Pastello - Oro



GRAPHIC DESIGN  
STUDIO BENVENUTI - FIRENZE

PHOTOGRAPHY  
COM & MEDIA – SCANDICCI  
FOTO STUDIO AG DI ALESSANDRO GHEDINA - FIRENZE  
QUASAR – PIOMBINO DESE  
SM PHOTO ART - FIRENZE

PRINTED ON MARCH 2013 BY  
FEDERIGHI COLORGRAFICHE - CERTALDO

ACKNOWLEDGEMENTS  
CRISTALLERIA NUOVA CEV - EMPOLI  
KEOMA SALOTTI – MATERA  
VISMARA DESIGN - SEVESO



*All our production complies with community directives on:*  
“low voltage”(2006/95/CE)  
CEI EN 60598-1 VIII edizione  
CEI EN 60598-1/A1: 2007  
CEI EN 60598-2-1 II edizione  
CEI EN 60598-2-4 IV edizione  
“electromagnetic compatibility”(EMC 2004/108/CE)  
CEI EN 55015 V ed.var. A1 e A2  
CEI EN 61000-3-2 IV ed.  
CEI EN 61000-3-3 I ed. var. A1  
CEI EN 61000-4-2 I ed. var. A1 e A2  
CEI EN 61000-4-4 II ed.  
CEI EN 61000-4-5 II ed.  
CEI EN 61000-4-6 I ed. var. A1  
CEI EN 61000-4-3 III ed.  
CEI EN 61000-4-11 II ed.  
CEI EN 61547 I ed. var. A1  
  
RHOS 2002/95 RAE 2002/96.  
  
GOST-R  
GOST-UA







# MASCA

**Masca s.r.l.**

*Showroom and Laboratories*

Via Pistoiese, 1 - 50013 San Donnino (Florence) - ITALY

Tel. +39 055.8999155 +39 055.8961839

Fax +39 055.8998565

Web site: [www.masca.it](http://www.masca.it)

Mail address: [masca@masca.it](mailto:masca@masca.it)